

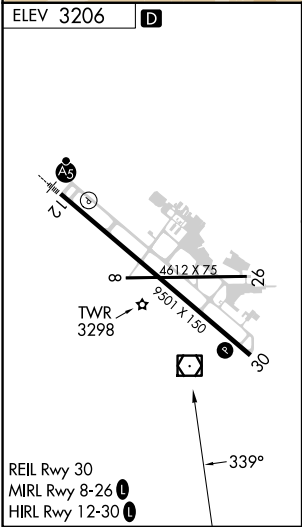
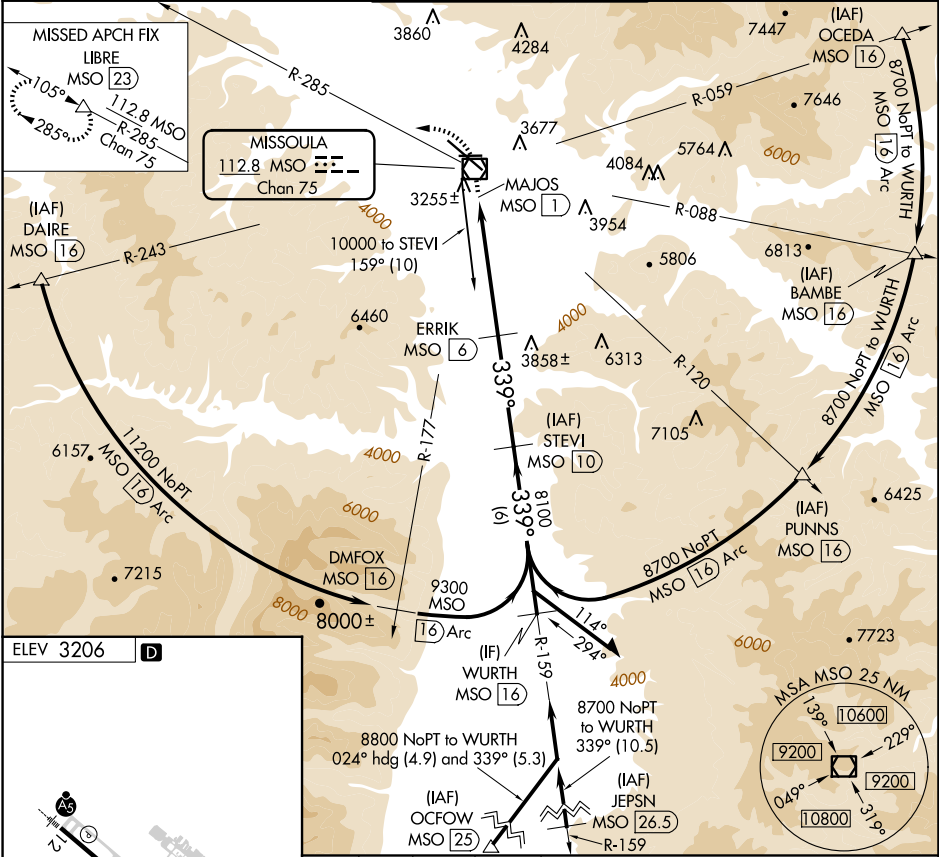
VOR/DME MSO	APP CRS	Rwy Idg	N/A
112.8	339°	TDZE	N/A
Chan 75		Apt Elev	3206

VOR-B
MISSOULA MONTANA (MSO)

RADAR required for procedure entry at JEPSN. DME required.

MISSED APPROACH: Climb to 9600 direct MSO VOR/DME and on MSO VOR/DME R-285 to LIBRE/MSO 23 DME and hold, continue climb-in-hold to 9600.

ATIS 126.65	SPOKANE APP CON ★ 124.9 298.95	MISSOULA TOWER ★ 118.4 (CTAF) 377.175	GND CON 121.9	UNICOM 122.95
-----------------------	--	---	-------------------------	-------------------------



9600	MSO	LIBRE	STEVI	Remain within 10 NM
↑	MSO R-285	△	MSO 10	
MSO VOR/DME	MAJOS MSO 1	ERRIK MSO 6		
1 NM	5 NM	4 NM		
CATEGORY	A	B	C	D
CIRCLING	4920-1¼ 1714 (1800-1¼)	4920-1½ 1714 (1800-1½)	4920-3 1714 (1800-3)	5160-3 1954 (2000-3)

NW-1, 10 JUL 2025 to 07 AUG 2025

NW-1, 10 JUL 2025 to 07 AUG 2025