

WAAS CH 65715 W12B	APP CRS 117°	Rwy Idg 9501 TDZE 3200 Apt Elev 3206
--	------------------------	---

RNAV (GPS) Y RWY 12

MISSOULA MONTANA (MSO)

RNP APCH.

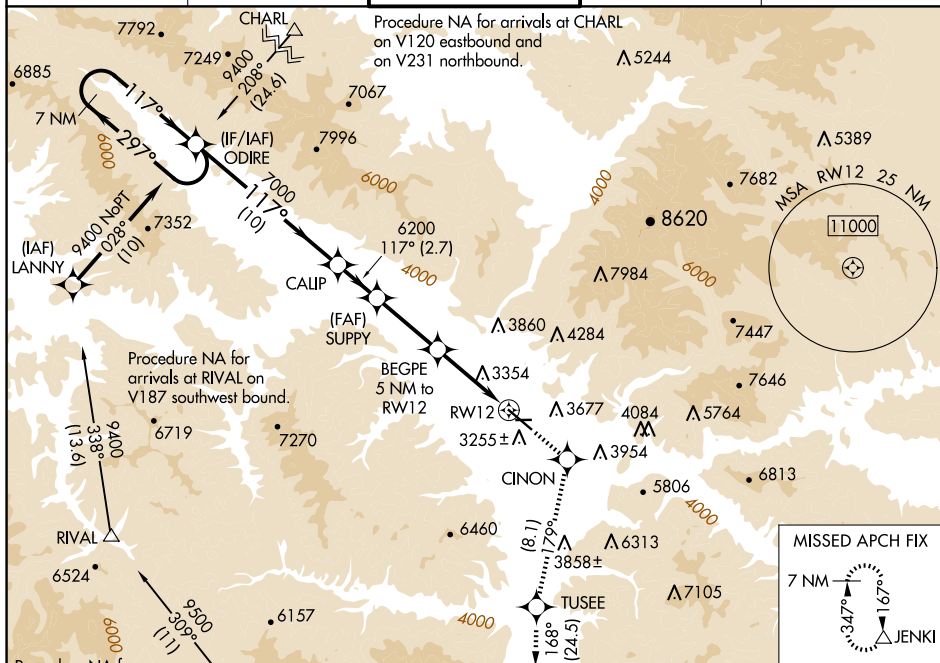
T Circling NA for Cats C and D northeast of Rwy 12-30. Inop
A table does not apply to LNAV # Cats C/D. Inop table does
❄ -12°C not apply to LPV† all Cats. **RVR 1800 authorized with
use of FD or AP or HUD to DA.

MALSRS



MISSED APPROACH: (Do not exceed 200K until CINON) Climb to 12000 direct CINON and on track 179° to TUSEE and on track 168° to JENKI and hold, continue climb-in-hold to 12000. ## Missed approach requires minimum climb of 325 feet per NM to 7700.

ATIS 126.65	SPOKANE APP CON ★ 124.9 298.95	MISSOULA TOWER ★ 118.4 (CTAF) 0 377.175	GND CON 121.9	UNICOM 122.95
-----------------------	--	---	-------------------------	-------------------------



Procedure NA for arrivals at JENKI on V231 southbound. EHRAY 7215

11800 309° (25) JENKI

ELEV 3206 TDZE 3200

7 NM Holding Pattern ODIRE

9400 297° 117° 7000

GP 3.00° TCH 55

10 NM 2.7 NM 4.3 NM 3.8 NM 1.2 NM

CALIP SUPPLY 6200 6200 *4840

BEGPE 5 NM to RW12 *1.2 NM to RW12

CATEGORY A B C D

LPV DA ** 3400/24 200 (200-½)

LPV DA † 4229-4 1029 (1100-4)

LNAV MDA # 3640/24 440 (500-½) 3640/40 440 (500-¾)

LNAV MDA # 4520/40 1320 (1400-¾) 4520/55 1320 (1400-1) 4520-3 1320 (1400-3)

CIRCLING 4520-1¼ 1314 (1400-1¼) 4700-1½ 1494 (1500-1½) 4700-3 1494 (1500-3) 5140-3 1934 (2000-3)

REIL Rwy 30 MIRL Rwy 8-26 HIRL Rwy 12-30

TWR 3298

4612 X 75 2501 X 150