

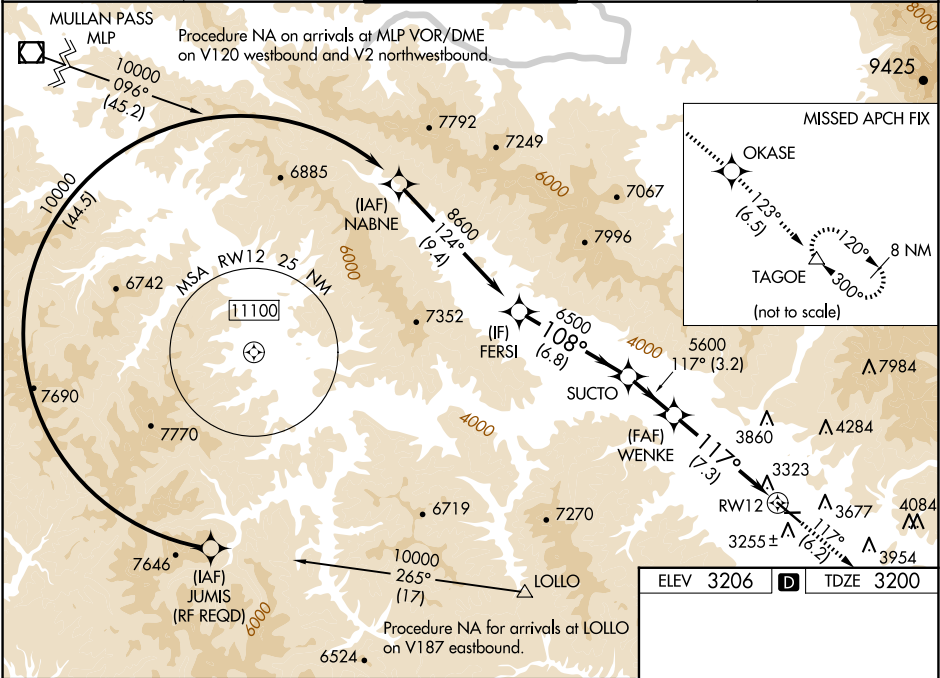
APP CRS	Rwy Idg	9501
117°	TDZE	3200
	Apt Elev	3206

RNAV (RNP) Z RWY 12

MISSOULA MONTANA (MISO)

RNP AR APCH.	MALSR	MISSED APPROACH: Climb to 13000 on track 117° to OKASE and on track 123° to TAGOE and hold, continue climb-in-hold to 13000. *Missed approach requires minimum climb of 350 feet per NM to 8300; if unable to meet climb gradient, see RNAV (GPS) Y RWY 12. #Missed approach requires minimum climb of 425 feet per NM to 8300.
 For uncompensated Baro-VNAV systems, LNAV/VNAV NA below -21° C (-6°F) or above 43°C (109°F). For inop ALS, increase RNP 0.12 all Cats visibility to RVR 6000. For inop ALS, increase RNP 0.30 all Cats visibility to 2½ SM. When local weather not received, procedure NA.	 5	

ATIS	SPOKANE APP CON*	MISSOULA TOWER*	GND CON	UNICOM
126.65	124.9 298.95	118.4 (CTAF) 0 377.175	121.9	122.95



VGSI and RNAV glidepath not coincident (VGSI Angle 3.00/TCH 55).		13000 ↑ tr 117°	OKASE ✧	tr 123°	TAGOE △	
FERSI	SUCTO	WENKE				
8600	6500	5600				
GP 3.00° TCH 45	RW12					
6.8 NM		3.2 NM	7.3 NM			
CATEGORY	A	B	C	D		
RNP 0.12 DA#	3518/40 318 (400-¾)					
RNP 0.30 DA*	3880-2 680 (700-2)					
AUTHORIZATION REQUIRED						
REIL Rwy 30 MIRL Rwy 8-26 HIRL Rwy 12-30						