

APP CRS
298°

Rwy Idg
TDZE
Apt Elev

9501
3206
3206

RNAV (RNP) RWY 30

MISSOULA MONTANA (MSO)

RNP AR APCH. RF required.

▼

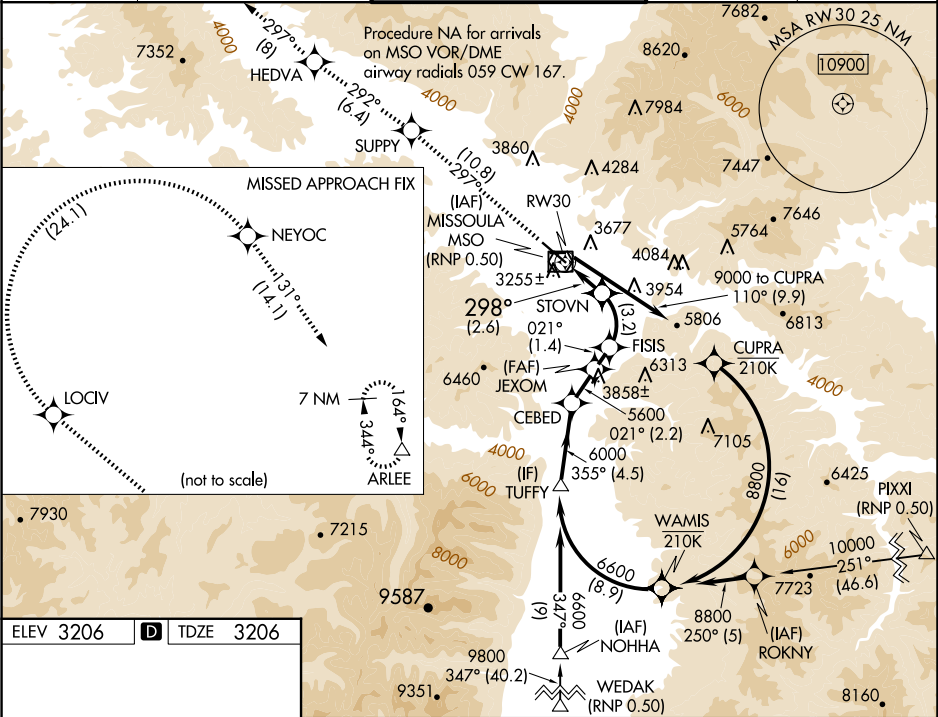
▲

☒

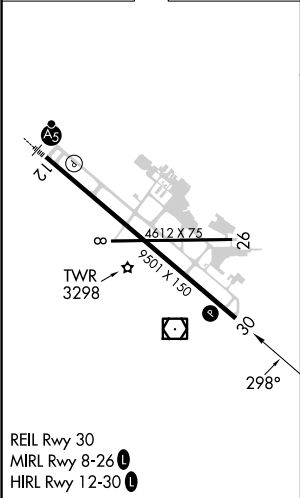
For uncompensated Baro-VNAV systems, procedure NA below -21°C (-5°F) or above 43°C (109°F). When local altimeter setting not received, procedure NA.

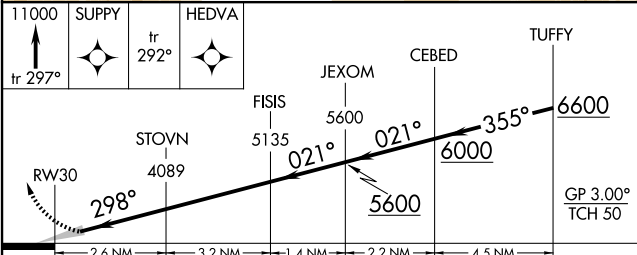
MISSED APPROACH: Climb to 11000 on track 297° to SUPPY and on track 292° to HEDVA and on track 297° to LOCIV, then right turn to NEYOC and on track 131° to ARLEE and hold. *Missed approach requires minimum climb of 215 feet per NM to 5000.

ATIS 126.65	SPOKANE APP CON ★ 124.9 298.95	MISSOULA TOWER ★ 118.4 (CTAF) 377.175	GND CON 121.9	UNICOM 122.95
----------------	-----------------------------------	--	------------------	------------------



ELEV 3206	D	TDZE 3206
-----------	---	-----------



11000 ↑ tr 297°	SUPPY ✧	tr 292° ✧	HEDVA					
								
CATEGORY	A		B		C		D	
RNP 0.30 DA *	3524-1 318 (400-1)							
RNP 0.30 DA	3582-1¼ 376 (400-1¼)							
AUTHORIZATION REQUIRED								

NW-1, 10 JUL 2025 to 07 AUG 2025

NW-1, 10 JUL 2025 to 07 AUG 2025