

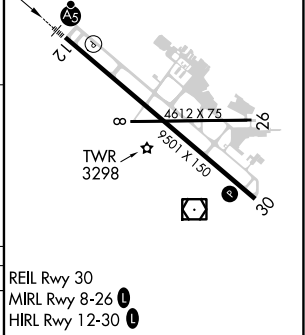
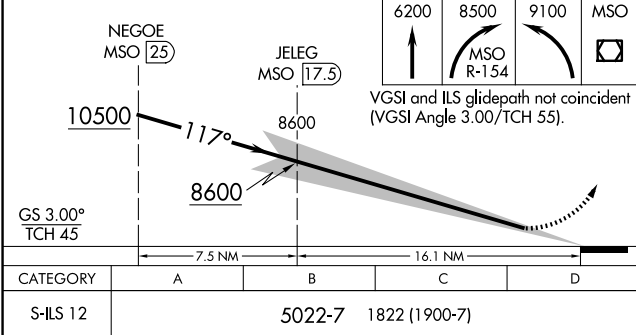
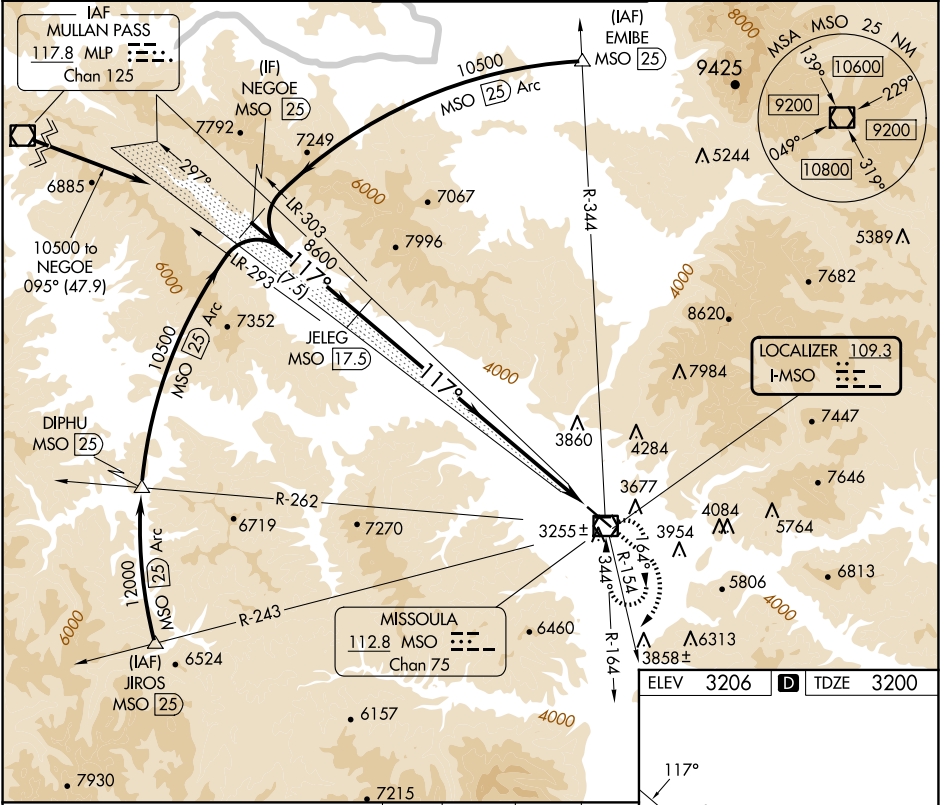
LOC I-MSO	APP CRS	Rwy Idg	9501
109.3	117°	TDZE	3200
		Apt Elev	3206

ILS Y RWY 12

MISSOULA MONTANA (MSO)

DME required.	MALSR	MISSED APPROACH: Climb to 6200 then climbing right turn to 8500 on MSO VOR/DME R-154 then climbing left turn to 9100 direct MSO VOR/DME and hold.
NA Inoperative table does not apply.		

ATIS	SPOKANE APP CON *	MISSOULA TOWER *	GND CON	UNICOM
126.65	124.9 298.95	118.4 (CTAF) 377.175	121.9	122.95



NW-1, 10 JUL 2025 to 07 AUG 2025

NW-1, 10 JUL 2025 to 07 AUG 2025