

MINNEAPOLIS APP CON
126.95 335.5
D-ATIS ARR
135.35 239.275

MINNEAPOLIS
115.3 MSP :
Chan 100

NOTE: RADAR required.
NOTE: DME required.
NOTE: Chart not to scale.

ARRIVAL ROUTE DESCRIPTION

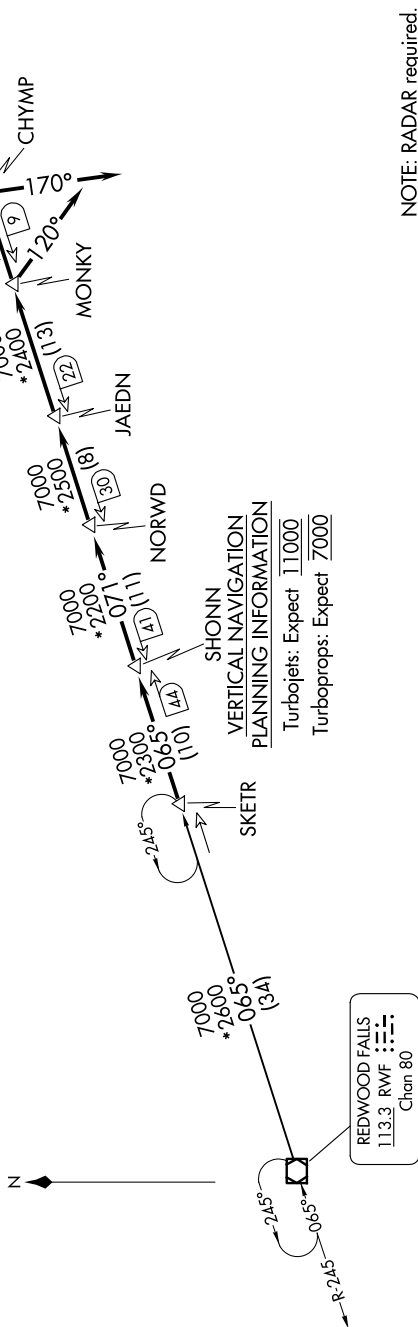
REDWOOD FALLS TRANSITION (RWF.SKETR5): From over RWF VOR/DME on RWF R-065 to SKETR/34 DME. Thence

From over SKETR/RWF 34 DME via RWF R-065 to SHONN/RWF 44 DME, then via MSP R-251 to NORWD/MSP 30 DME, then via MSP R-251 to JAEDN/MSP 22 DME, then via MSP R-251 to MONKY/MSP 9 DME, hence

LANDING MSP RUNWAY 30L/R: . . . depart MONKY/MSP 9 DME heading 120° for
RADAR vectors to final approach course.

LANDING MSP RUNWAY 35: . . . depart MONKY/MSP 9 DME via MSP R-251 to CHYMP/MSP 8 DME, then via heading 170° for RADAR vectors to final approach course.

ALL OTHER RUNWAYS: . . . via RADAR vectors to final approach course.



SKETR FIVE ARRIVAL

(SKETR.SKETR5) 10JAN13

MINNEAPOLIS, MINNESOTA

MINNEAPOLIS-ST PAUL INTL/WOLD-CHAMBERLAIN (MSP)