

RNAV (GPS) Z RWY 12R

MINNEAPOLIS-ST PAUL INTL/WOLD-CHAMBERLAIN (MSP)

WAAS CH 50125 W12A	APP CRS 121°	Rwy Idg 10000 TDZE 842 Apt Elev 842
--	------------------------	--

T For uncompensated Baro-VNAV systems, LNAV/VNAV NA below -20°C (-4°F) or above 54°C (130°F). Simultaneous approach authorized with Rwy 12L. DME/DME RNP-0.3 NA. Use of FD or AP providing RNAV track guidance required during simultaneous operations. For inop ALS, increase LPV Cat E visibility to RVR 4000, increase LNAV/VNAV Cat E visibility to 1½ SM, and increase LNAV Cat C/D/E visibility to RVR 5500. LNAV procedure NA during simultaneous operations.

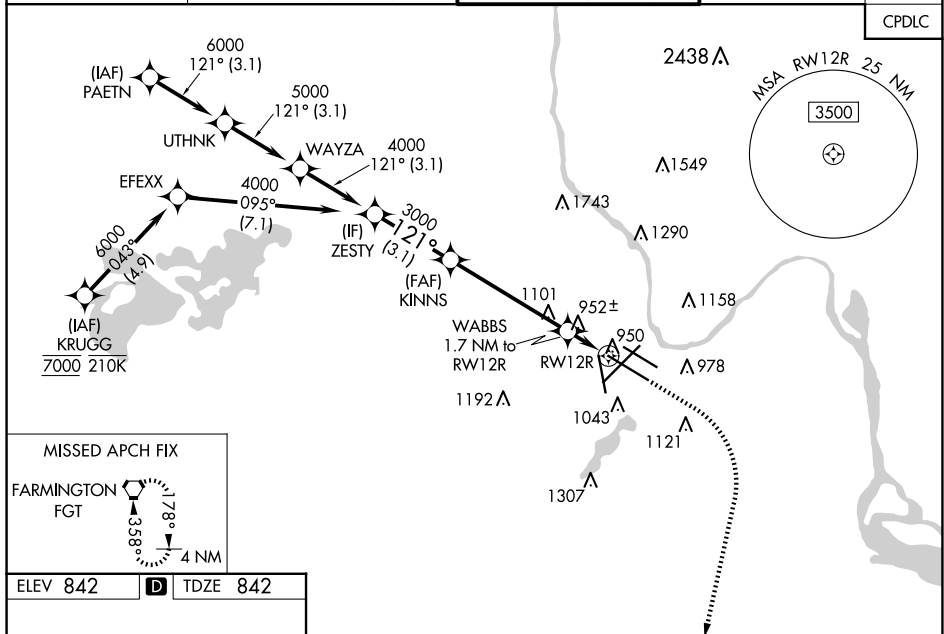
ALSF-2



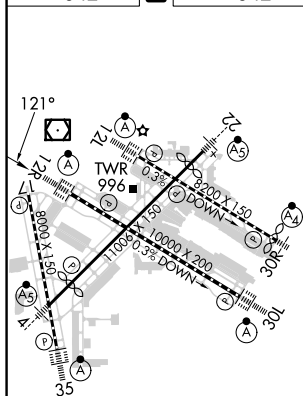
MISSED APPROACH:
Climb to 1300 then
climbing right turn to
3000 direct FGT
VORTAC and hold.

D-ATIS	MINNEAPOLIS APP CON	MINNEAPOLIS TOWER	GND CON	CLINIC DEL
ARR 135.35 239.275	118.725 335.65 (Rwy 35)	123.675 273.55 (17-35)	N 121.8 348.6	133.2
DEP 120.8	119.3 335.65 (12L-30R, 4-22, 17)	123.95 273.55 (12L-30R)	S 121.9 348.6	
	126.95 335.65 (12R-30L, 4-22)	126.7 273.55 (12R-30L, 4-22)	W 127.925 348.6	

CPDLC



ELEV 842	D	TDZE 842
----------	----------	----------



HIRL all Rwys
REIL Rwy 17
TDZ/CL Rwys 12L, 12R, 30L, and 35

<p>VGSI and RNAV glidepath not coincident (VGSI Angle 3.00/TCH 66).</p> <p>ZESTY KINNS WABBS 1.7 NM to RW12R</p> <p>4000 3000 1300 3000 FGT</p> <p>121° *1420 *1 NM to RW12R RW12R</p> <p>GP 3.00° TCH 50 *LNAV only</p> <p>3.1 NM 4.9 NM 0.7 NM 1 NM</p>					
CATEGORY	A	B	C	D	E
LPV DA	1042/18 200 (200-½)				
LNAV/VNAV DA	1211/40 369 (400-¾)				
LNAV MDA	1220/24 378 (400-½)		1220/35 378 (400-⅝)		
CIRCLING	1360-1 518 (600-1)		1460-1¾ 618 (700-1¾)	1660-2¾ 818 (900-2¾)	1800-3 958 (1000-3)

MINNEAPOLIS, MINNESOTA

Amdt 4A 12OCT17

MINNEAPOLIS-ST PAUL INTL /WOLD-CHAMBERLAIN (MSP)

44°53'N-93°13'W

RNAV (GPS) Z RWY 12R