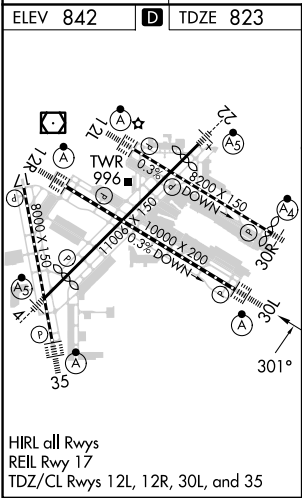
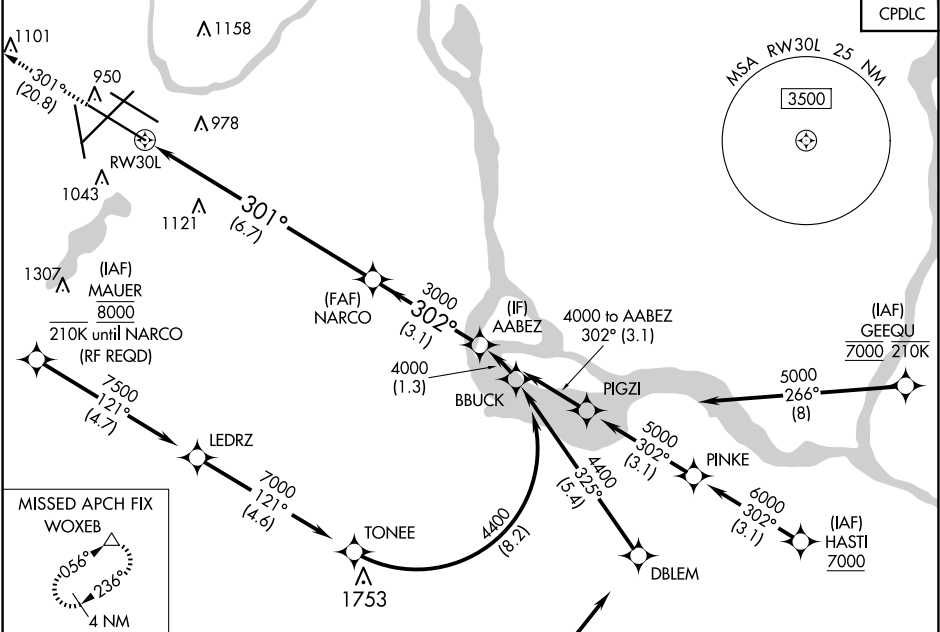
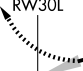


APP CRS	Rwy Idg	10000
301°	TDZE	823
	Apt Elev	842

RNAV (RNP) Y RWY 30L
MINNEAPOLIS-ST PAUL INTL/WOLD-CHAMBERLAIN (MSP)

▼ For uncompensated Baro-VNAV systems, procedure NA below -19°C (-2°F) or above 54°C (130°F). GPS required. Simultaneous approaches authorized with Rwy 30R and ILS V RWY 35 (CONVERGING).		ALSF-2 	MISSED APPROACH: Climb to 3000 on track 301° to WOXEB and hold.	
D-ATIS ARR 135.35 239.275 DEP 120.8	MINNEAPOLIS APP CON 118.725 335.65 (Rwy 35) 119.3 335.65 (12L-30R, 4-22, 17) 126.95 335.65 (12R-30L)	MINNEAPOLIS TOWER 123.675 273.55 (17-35) 123.95 273.55 (12L-30R) 126.7 273.55 (12R-30L, 4-22)	GND CON N 121.8 348.6 S 121.9 348.6 W 127.925 348.6	CLNC DEL 133.2
CPDLC				



<div><div>3000</div><div>↑</div><div>tr 301°</div></div> <div><div>WOXEB</div><div>△</div></div> <div><div>VGSI and RNAV glidepath not coincident</div><div>(VGSI Angle 3.00/TCH 78).</div></div>		<div><div>NARCO</div><div>3000</div></div>		<div><div>AABEZ</div><div>4000</div></div>
<div><div>RW30L</div><div></div></div>		<div><div>301°</div><div>302°</div><div>3000</div><div>GP 3.00°</div><div>TCH 55</div></div>		
<div>6.7 NM</div>		<div>3.1 NM</div>		
CATEGORY	A	B	C	D
RNP 0.30 DA	1150/30 327 (400-%)			
AUTHORIZATION REQUIRED				

NC-1, 10 JUL 2025 to 07 AUG 2025

NC-1, 10 JUL 2025 to 07 AUG 2025