

MINNEAPOLIS, MINNESOTA


AL-264 (FAA)

25107

APP CRS 121°	Rwy Idg 10000 TDZE 842 Apt Elev 842
------------------------	--

RNAV (RNP) Y RWY 12R

MINNEAPOLIS-ST PAUL INTL/WOLD-CHAMBERLAIN (MSP)

<p>▼ For uncompensated Baro-VNAV systems, procedure NA below -20°C (-4°F) or above 54°C (130°F). Simultaneous approach authorized with Rwy 12L. GPS required. For inop ALS, increase RNP 0.15 all Cats visibility to RVR 6000.</p>	<p>ALSF-2</p> 	<p>MISSED APPROACH: Climb to 1300 then climbing right turn to 3000 direct FGT VORTAC and hold.</p>
--	---	--

D-ATIS		MINNEAPOLIS APP CON	MINNEAPOLIS TOWER	GND CON	CLNC DEL
ARR	135.35 239.275	118.725 335.65 (Rwy 35)	123.675 273.55 (17-35)	N 121.8 348.6	
		119.3 335.65 (12L-30R, 4-22, 17)	123.95 273.55 (12L-30R)	S 121.9 348.6	133.2
DEP	120.8	126.95 335.65 (12R-30L)	126.7 273.55 (12R-30L, 4-22)	W 127.925 348.6	

CPDLC

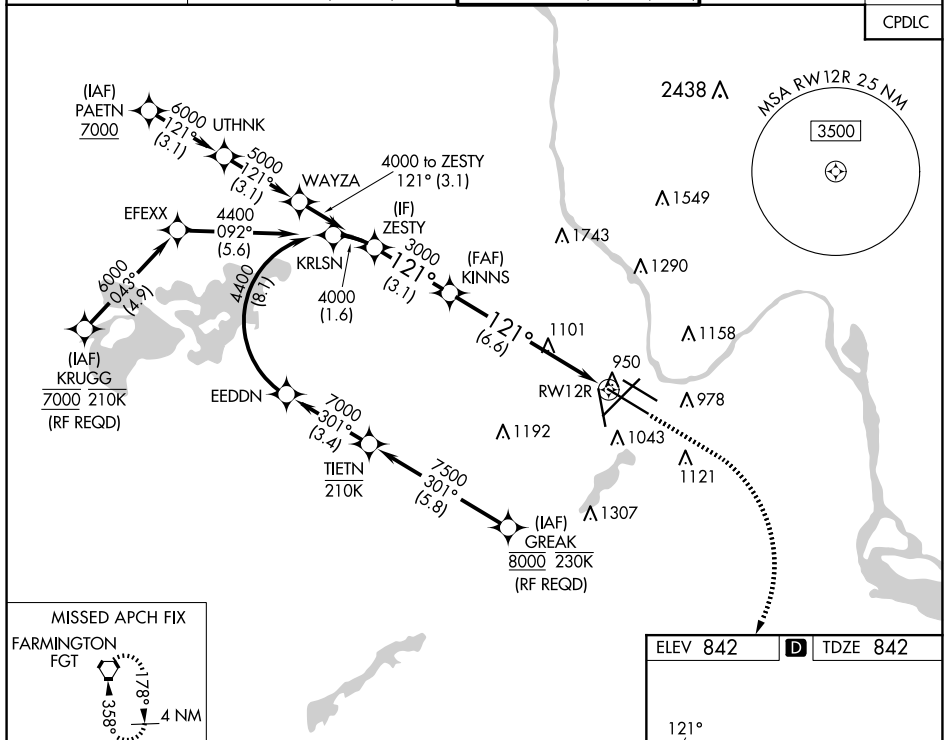
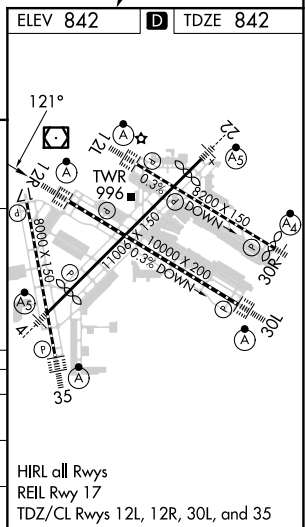


Diagram illustrating the Zesty 121° glidepath. The glidepath starts at 4000 feet at ZESTY, descends at 121 degrees to 3000 feet at KINNS, and then continues to RW12R. The distance from ZESTY to KINNS is 3.1 NM, and from KINNS to RW12R is 6.6 NM. A note states: "VGSI and RNAV glidepath not coincident (VGSI Angle 3.00/TCH 66)". A legend indicates: 1300 (up arrow), 3000 (curved arrow), and FGT (pentagon symbol). The glidepath is labeled "GP 3.00° TCH 50".

CATEGORY	A	B	C	D
RNP 0.15 DA	1191/40 349 (400-¾)			
RNP 0.30 DA	1251/45 409 (500-⅞)			

AUTHORIZATION REQUIRED



MINNEAPOLIS, MINNESOTA
Amdt 1 05JAN17

MINNEAPOLIS-ST PAUL INTL/WOLD-CHAMBERLAIN (MSP)
44°53'N-93°13'W RNAV (RNP) Y RWY 12R

NC-1, 10 JUL 2025 to 07 AUG 2025