

LOC I-APL <b><u>109.3</u></b>	APP CRS <b>045°</b>	Rwy Idg <b>9456</b> TDZE <b>832</b> Apt Elev <b>842</b>
----------------------------------	------------------------	---

## LOC RWY 4

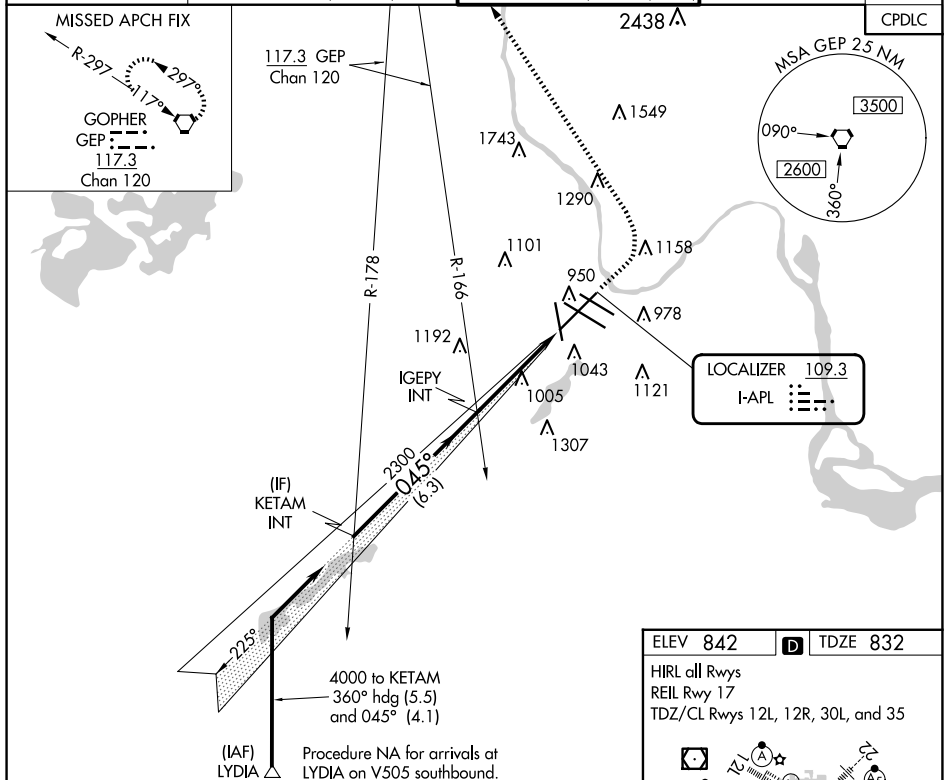
MINNEAPOLIS-ST PAUL INTL/WOLD-CHAMBERLAIN (MSP)

**T**  
**A** For inop ALS, increase S-4 Cat C/D/E visibility to 1  $\frac{3}{8}$  SM.

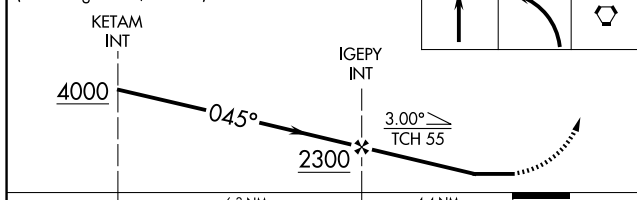


**MISSED APPROACH:** Climb to 1500 then climbing left turn to 3000 direct GEP VORTAC and hold.

D-ATIS	MINNEAPOLIS APP CON	MINNEAPOLIS TOWER	GND CON	CUNC DEL
ARR 135.35 239.275	118.725 335.65 (Rwy 35)	123.675 273.55 (17-35)	N 121.8 348.6	
DEP 120.8	119.3 335.65 (12L-30R, 4-22, 17)	123.95 273.55 (12L-30R)	S 121.9 348.6	133.2
	126.95 335.65 (12R-30L, 4-22)	126.7 273.55 (12R-30L, 4-22)	W 127.925 348.6	



VGSI and descent angles not coincident  
(VGSI Angle 3.00/TCH 76).



CATEGORY	6.3 NM		4.4 NM		E
	A	B	C	D	
S-4	1340/24	508 (500-½)	1340/55 508 (500-1)		
<b>C</b> CIRCLING	1360-1	518 (600-1)	1460-1¾ 618 (700-1¾)	1660-2¾ 818 (900-2¾)	1800-3 958 (1000-3)

ELEV 842 D TDZE 832

HIRL all Rwys  
 REIL Rwy 17  
 TDZ/CL Rwys 12L, 12R, 30L, and 35

FAF to MAP 4.4 NM					
Knots	60	90	120	150	180
Min:Sec	4:24	2:56	2:12	1:46	1:28