

LOC/DME I-PJL	APP CRS	Rwy Idg	7620
110.7	121°	TDZE	841
Chan 44		Apt Elev	842

ILS or LOC RWY 12L

MINNEAPOLIS-ST PAUL INTL/WOLD-CHAMBERLAIN (MSP)

⚠

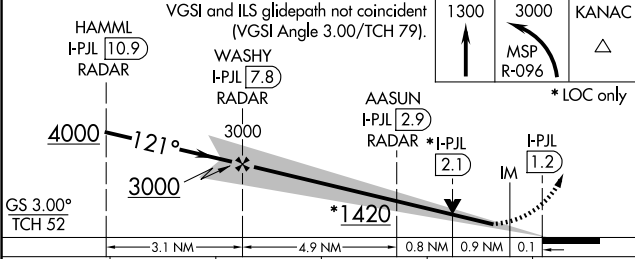
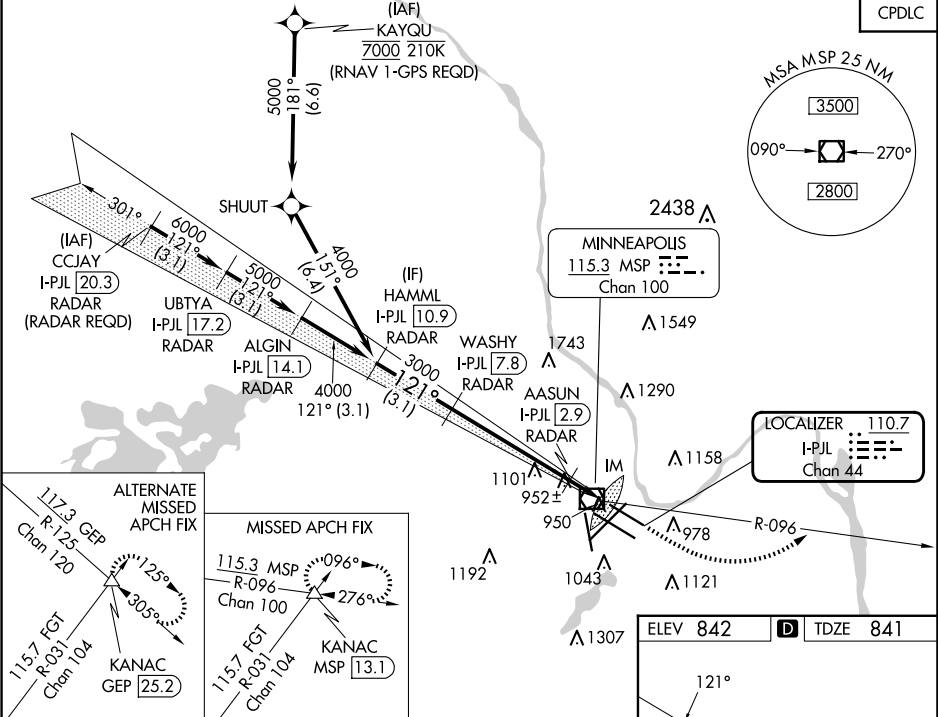
Simultaneous approach authorized with Rwy 12R. For inop ALS, increase S-ILS 12L Cat E visibility to RVR 4000, S-LOC 12L Cat C/D/E visibility to RVR 5500. DME or RADAR required.

ALS F-2

MISSED APPROACH:

Climb to 1300, then climbing left turn to 3000 on MSP VOR/DME R-096 to KANAC INT/MSP 13.1 DME and hold.

D-ATIS	MINNEAPOLIS APP CON	MINNEAPOLIS TOWER	GND CON	CLNC DEL
ARR 135.35 239.275	118.725 335.65 (Rwy 35)	123.675 273.55 (17-35)	N 121.8 348.6	133.2
DEP 120.8	119.3 335.65 (12L-30R, 4-22, 17)	123.95 273.55 (12L-30R)	S 121.9 348.6	
	126.95 335.65 (12R-30L)	126.7 273.55 (12R-30L, 4-22)	W 127.925 348.6	



CATEGORY	A	B	C	D	E
S-ILS 12L	1041/18 200 (200-½)				
S-LOC 12L	1220/24 379 (400-½)	1220/35 379 (400-¾)			
CIRCLING	1360-1 518 (600-1)	1460-1¾ 618 (700-1¾)	1660-2¾ 818 (900-2¾)	1800-3 958 (1000-3)	

