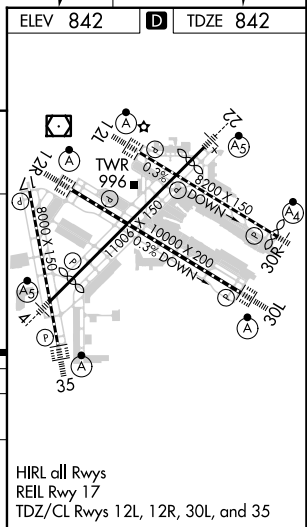
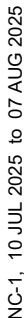


**ILS RWY 12R (SA CAT I)**  
MINNEAPOLIS-ST PAUL INTL/WOLD-CHAMBERLAIN (MSP)

**MISSED APPROACH:** Climb to 1300 then climbing right turn to 3000 direct FGT VORTAC and hold.

CPDLC

MINNEAPOLIS-ST PAUL INTL/WOLD-CHAMBERLAIN (MSP)  
44°53'N-93°13'W ILS RMW 12B (SA CAT 1)

ILS RWY 12R (SA CAT I)