

LOC/DME I-PJL	APP CRS	Rwy Idg	7620
110.7	121°	TDZE	841
Chan 44		Apt Elev	842

ILS RWY 12L (CAT II & III)

MINNEAPOLIS-ST PAUL INTL/WOLD-CHAMBERLAIN (MSP)

⚠

Simultaneous approach authorized with Rwy 12R.
CAT II: RVR 1000 authorized with specific OPSPEC, MSPEC, or LOA approval and use of autoland or HUD to touchdown.
DME or RADAR required.

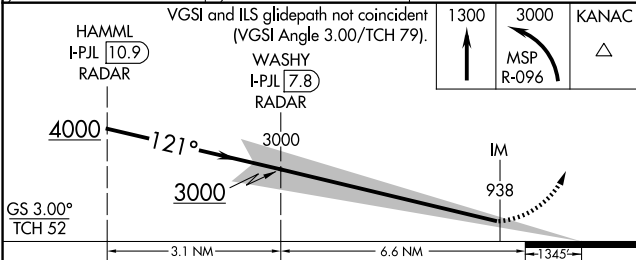
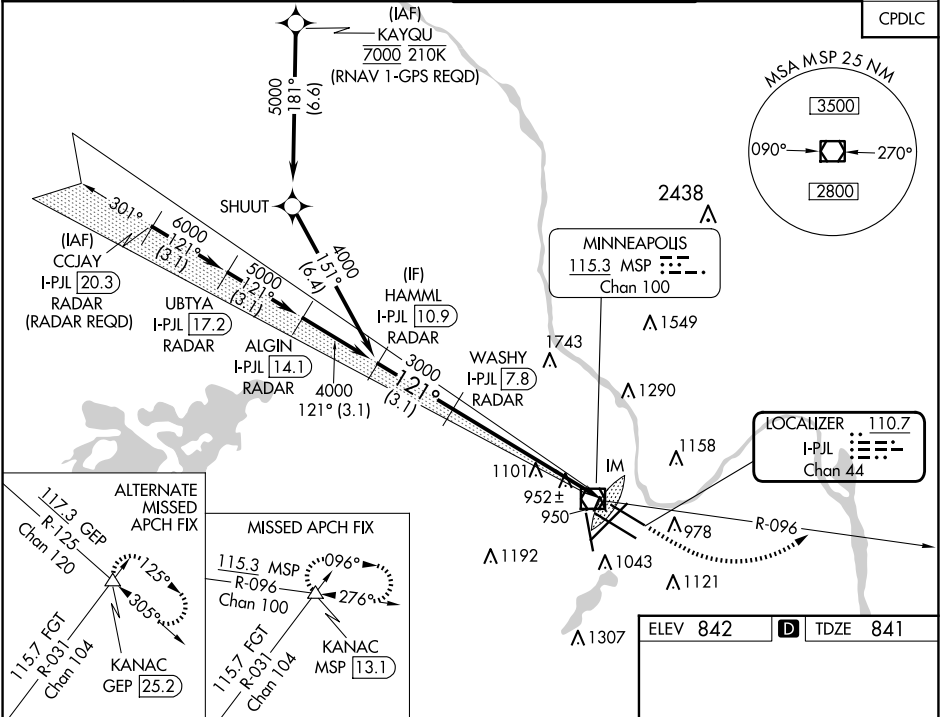
ALSF-2

ⓐ

ⓑ

MISSED APPROACH: Climb to 1300, then climbing left turn to 3000 on MSP VOR/DME R-096 to KANAC INT/MSP 13.1 DME and hold.

D-ATIS	MINNEAPOLIS APP CON	MINNEAPOLIS TOWER	GND CON	CLNC DEL
ARR 135.35 239.275	118.725 335.65 (Rwy 35)	123.675 273.55 (17-35)	N 121.8 348.6	133.2
DEP 120.8	119.3 335.65 (12L-30R, 4-22, 17)	123.95 273.55 (12L-30R)	S 121.9 348.6	
	126.95 335.65 (12R-30L)	126.7 273.55 (12R-30L, 4-22)	W 127.925 348.6	

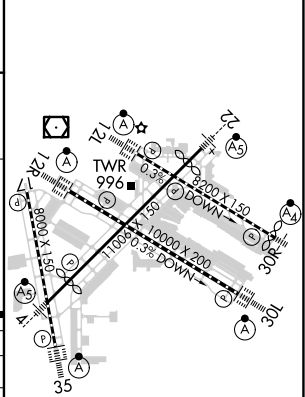


CATEGORY	A	B	C	D
S-ILS 12L	CAT II RA 91/12 100 DA 941			
S-ILS 12L	CAT III RVR 07			

CATEGORY II & III ILS - SPECIAL AIRCREW

& AIRCRAFT CERTIFICATION REQUIRED

ELEV 842	D	TDZE 841
----------	---	----------



HIRL all Rwys
REIL Rwy 17
TDZ/CL Rwys 12L, 12R, 30L, and 35

NC-1, 10 JUL 2025 to 07 AUG 2025

NC-1, 10 JUL 2025 to 07 AUG 2025