



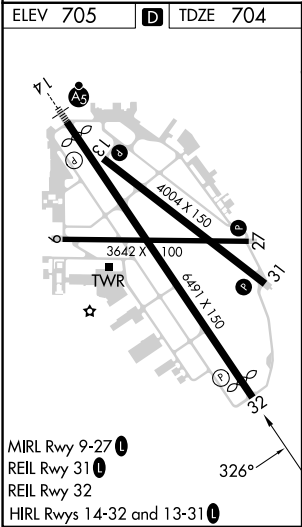
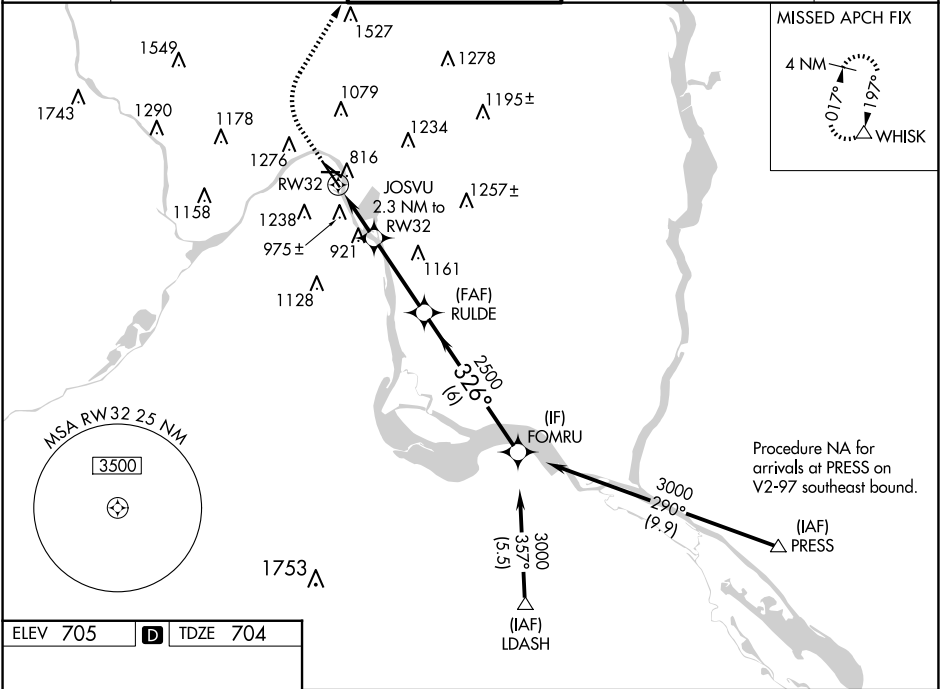
WAAS CH <b>50123</b> <b>W32A</b>	APP CRS <b>326°</b>	Rwy ldg <b>6109</b> TDZE <b>704</b> Apt Elev <b>705</b>
--	------------------------	---

RNAV (GPS) RWY 32

ST PAUL DOWNTOWN HOLMAN FLD (STP)

RNP APCH - GPS.		MISSED APPROACH: Climb to 1400 then climbing right turn to 3000 direct WHISK and hold.
	Rwy 32 helicopter visibility reduction below ¾ SM NA.	
	For uncompensated Baro-VNAV systems, LNAV/VNAV NA below -21°C or above 54°C.	

ATIS <b>118.35</b>	MINNEAPOLIS APP CON <b>121.2 335.65</b>	ST. PAUL TOWER ★ <b>119.1(CTAF) 257.8</b>	GND CON <b>121.675</b>	CLNC DEL <b>121.675</b>	UNICOM <b>122.95</b>
-----------------------	--	--	---------------------------	----------------------------	-------------------------



ELEV 705		D		TDZE 704	
1400		3000		WHISK	
JOSVU		RULDE		FOMRU	
2.3 NM to RW32		2500		3000	
1.6 NM to RW32		1460		2500	
1.6 NM		0.7 NM		3.2 NM	
6 NM		GP 3.00°		TCH 40	
CATEGORY	A	B	C	D	
LPV DA	1031/50		327 (400-1)		
LNAV/VNAV DA	1258-1 5/8		554 (600-1 1/2)		
LNAV MDA	1240/55	536 (600-1)	1240-1 1/2	536 (600-1 1/2)	
CIRCLING	1580-1 1/4	875 (900-1 1/4)	1580-2 1/2	875 (900-2 3/4)	

NC-1, 10 JUL 2025 to 07 AUG 2025

NC-1, 10 JUL 2025 to 07 AUG 2025