

WAAS CH 62828 W14A	APP CRS 146°	Rwy Idg TDZE Apt Elev 705	6148 705 705
--	------------------------	--	---

RNAV (GPS) RWY 14

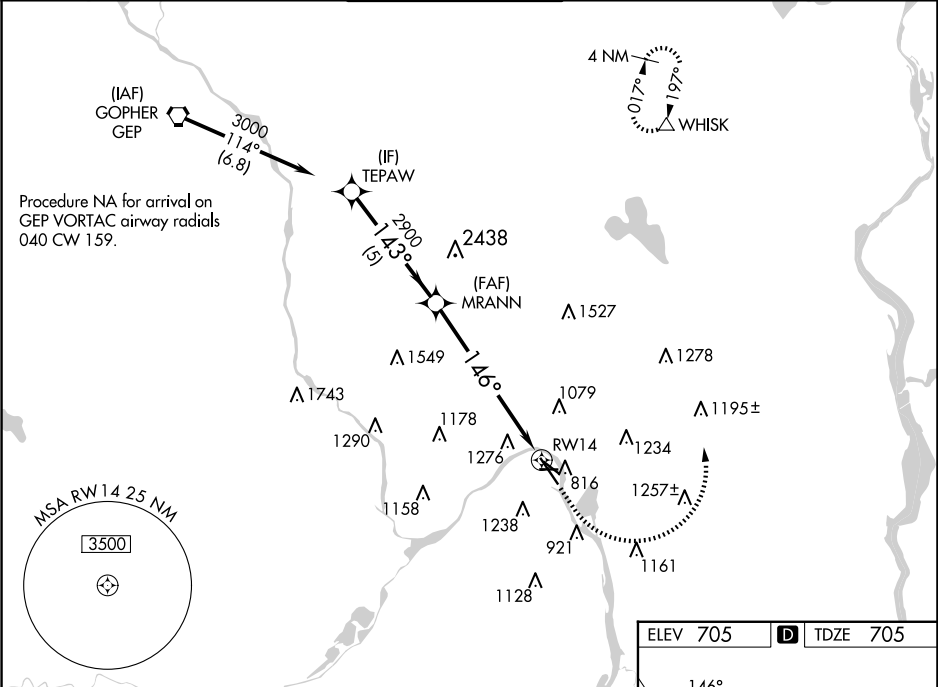
ST PAUL DOWNTOWN HOLMAN FLD (STP)

For uncompensated Baro-VNAV systems, LNAV/VNAV NA below -21°C (-5°F) or above 54°C (130°F). Rwy 14 helicopter visibility reduction below ¾ SM NA. DME/DME RNP-0.3 NA. For inop MALSR, increase LNAV Cats C and D to 2½ SM.

MALSR

MISSED APPROACH: (Do not exceed 250K until WHISK) Climb to 1700 then climbing left turn to 3000 direct WHISK and hold.

ATIS 118.35	MINNEAPOLIS APP CON 121.2 335.65	ST. PAUL TOWER ★ 119.1(CTAF) 0 257.8	GND CON 121.675	CLNC DEL 121.675	UNICOM 122.95
-----------------------	--	--	---------------------------	----------------------------	-------------------------



TEPAW

MRANN

RW14

VGSI and RNAV glidepath not coincident (VGSI Angle 3.00/TCH 50).

3000

2900

1700

3000

WHISK

GP 3.00°

TCH 42

* 2.4 NM to RW14

* LNAV only.

CATEGORY	A	B	C	D
LPV DA	955/40 250 (300-¾)			
LNAV/VNAV DA	1511-2½ 806 (900-2½)			
LNAV MDA	1520/40 815 (900-¾)	1520-1⅞ 815 (900-1⅞)		
CIRCLING	1580-1¼ 875 (900-1¼)	1580-2½ 875 (900-2½)	1580-2¾ 875 (900-2¾)	

ELEV 705

TDZE 705

MIRL Rwy 9-27

REIL Rwy 31

REIL Rwy 32

HIRL Rlys 14-32 and 13-31