

LOC/DME I-BAO	APP CRS	Rwy Idg	6109
111.5	326°	TDZE	704
Chan 52		Apt Elev	705

ILS or LOC RWY 32

ST PAUL DOWNTOWN HOLMAN FLD (STP)

DME or RADAR required. RADAR required for procedure entry.

▼

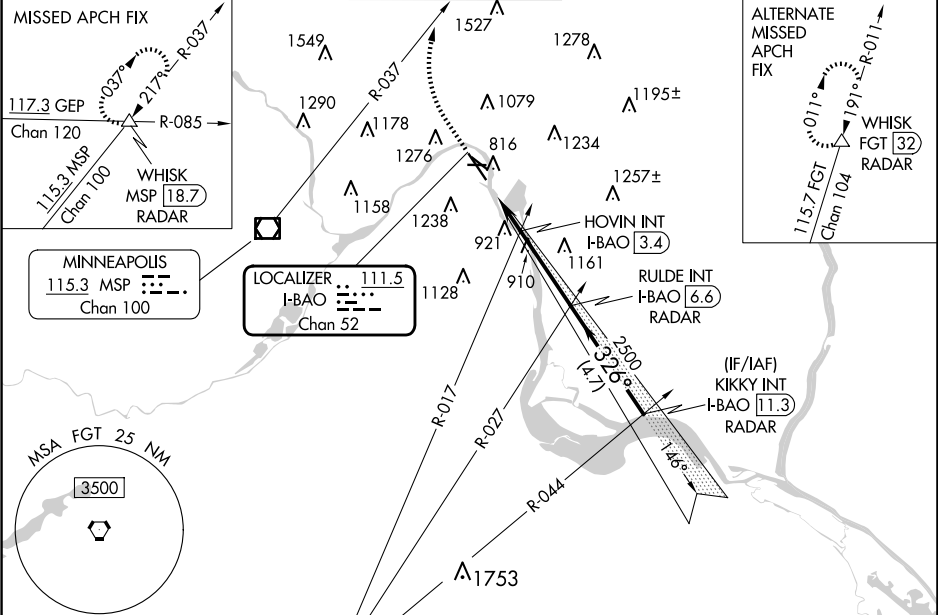
▲

❄

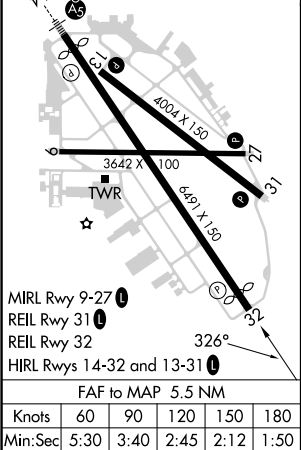
Rwy 32 helicopter visibility reduction below RVR 4000 NA. Inop table does not apply to S-ILS 32 all Cats and S-LOC all Cats. HOVIN fix minimums: Inop table does not apply to Cats A/B. For inop ALS, increase Cats C/D visibility to 1 3⁄8 SM.

MISSED APPROACH: Climb to 1300 then climbing right turn to 4000 on heading 010° and MSP R-037 to WHISK INT/MSP 18.7 DME/RADAR and hold.

ATIS	MINNEAPOLIS APP CON	ST. PAUL TOWER *	GND CON	CLNC DEL	UNICOM
118.35	121.2 335.65	119.1 (CTAF) 0 257.8	121.675	121.675	122.95



ELEV 705	D	TDZE 704
----------	---	----------



1300	4000	MSP R-037	WHISK	RULDE INT I-BAO [6.6] RADAR	KIKKY INT I-BAO [11.3] RADAR
	hdg 010°				
*LOC only	I-BAO [1.1]	*I-BAO [2.6]	HOVIN INT I-BAO [3.4]	2500	2500
	1.5 NM	0.8 NM	3.2 NM	4.7 NM	GS 3.00° TCH 40
CATEGORY	A	B	C	D	
S-ILS 32	1011/50 307 (400-1)				
S-LOC 32	1460/55 756 (800-1)	1460/60 756 (800-1 1⁄4)	1460-2	756 (800-2)	
CIRCLING	1580-1 1⁄4	875 (900-1 1⁄4)	1580-2 1⁄2 875 (900-2 1⁄2)	1580-2 3⁄4 875 (900-2 3⁄4)	
HOVIN FIX MINIMUMS					
S-LOC 32	1220/55	516 (600-1)	1220-1 1⁄4	516 (600-1 1⁄4)	
CIRCLING	1580-1 1⁄4	875 (900-1 1⁄4)	1580-2 1⁄2 875 (900-2 1⁄2)	1580-2 3⁄4 875 (900-2 3⁄4)	