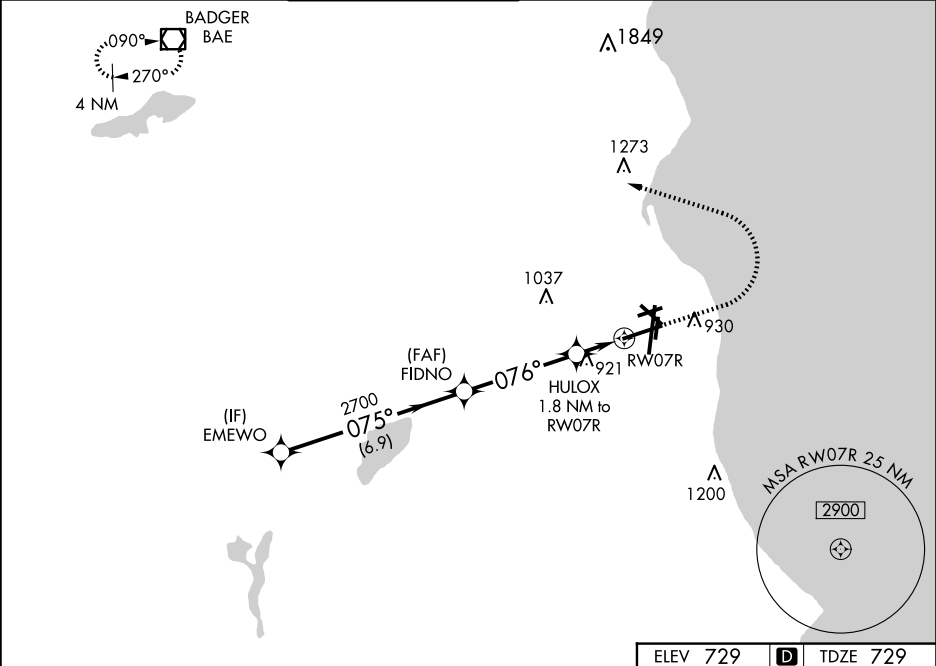


WAAS CH 69226 W07A	APP CRS 076°	Rwy Ldg TDZE Apt Elev 8012 729 729
--	------------------------	--

RNAV (GPS) Z RWY 7R

GENERAL MITCHELL INTL (MKE)

For uncompensated Baro-VNAV systems, LNAV/VNAV NA below -20°C (-4°F) or above 54°C (130°F). DME/DME RNP-0.3 NA. # RVR 1800 authorized with use of FD or AP or HUD to DA.			MALSR 	MISSED APPROACH: Climb to 2900 then climbing left turn to 3000 direct BAE VOR/DME and hold.	
D-ATIS 126.4	MILWAUKEE APP CON 126.5 307.0	MILWAUKEE TOWER 124.575 269.05	GND CON 121.8 263.125	CLNC DEL 120.8	CPDLC



VGSI and RNAV glidepath not coincident (VGSI Angle 3.00/TCH 63).					2900 	3000 	BAE
EMEWO 2900 075° 2700 076° *1340 HULOX 1.8 NM to RW07R *1.2 NM to RW07R RW07R					*LNAV only.		
GP 3.00° TCH 50							
CATEGORY	A		B	C	D		
LPV DA #	929/24 200 (200-½)						
LNAV/VNAV DA	1232-1¼ 503 (600-1¼)						
LNAV MDA	1180/24 451 (500-½)		1180/45 451 (500-¾)				
CIRCLING	1240-1 511 (600-1)		1240-1½ 511 (600-1½)		1360-2 631 (700-2)		

TDZ/CL Rwy 1L
 REIL Rws 1R, 7L,
 13, 25R, 25L and 31
 HIRL Rws 1L-19R and 7R-25L
 MIRL Rws 1R-19L, 13-31 and 7L-25R