

MILWAUKEE, WISCONSIN

AL-262 (FAA)

25163

| | | |
|---------|----------|------|
| APP CRS | Rwy Ldg | 7867 |
| 256° | TDZE | 683 |
| | Apt Elev | 729 |

RNAV (RNP) Y RWY 25L
GENERAL MITCHELL INTL (MKE)

RF required. RNP AR APCH.

T For uncompensated Baro-VNAV systems, procedure NA below -20°C or above 54°C.

MISSED APPROACH: Climb to 3700 on the RNAV missed approach route to PROOT and hold.

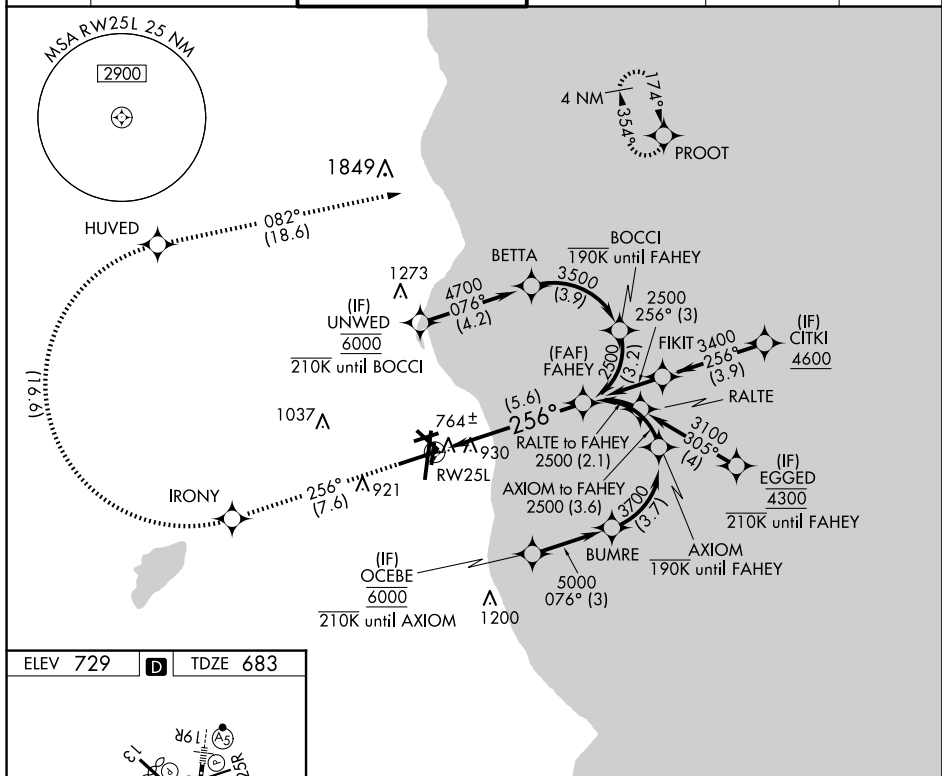
D-ATIS
126.4

MILWAUKEE APP CON
126.5 307.0

MILWAUKEE TOWER
124.575 269.05

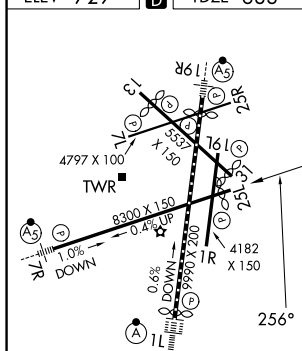
GND CON
121.8 263.125

CLNC DEL
120.8



ELEV 729

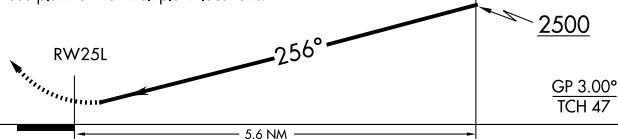
D TDZE 683



TDZ/CL Rwy 1L
REIL Rwys 1R, 7L,
13, 25R, 25L and 31
HIRL Rwys 1L-19R and 7R-25L
MIRL Rwys 1R-19L, 13-31 and 7L-25R

| | | | |
|---|---|---|---|
| 3700 | IRONY | HUVED | PROOT |
|  |  |  |  |

See planview for multiple IF locations.



| CATEGORY | A | B | C | D |
|-------------|---|----------|--------------|---|
| RNP 0.10 DA | | 1087-13% | 404 (400-1%) | |
| RNP 0.30 DA | | 1256-2 | 573 (600-2) | |

AUTHORIZATION REQUIRED

MILWAUKEE, WISCONSIN

Orig-B 13SEP18

GENERAL MITCHELL INTL (MKE)

42°57'N-87°54'W

RNAV (RNP) Y RWY 25L

EC-3, 10 JUL 2025 to 07 AUG 2025

EC-3, 10 JUL 2025 to 07 AUG 2025