

LOC/DME I-PXY <b>111.5</b> Chan <b>52</b>	APP CRS <b>256°</b>	Rwy Ldg <b>7867</b> TDZE <b>683</b> Apt Elev <b>729</b>
---	------------------------	---

LOC RWY 25L  
GENERAL MITCHELL INTL (MKE)

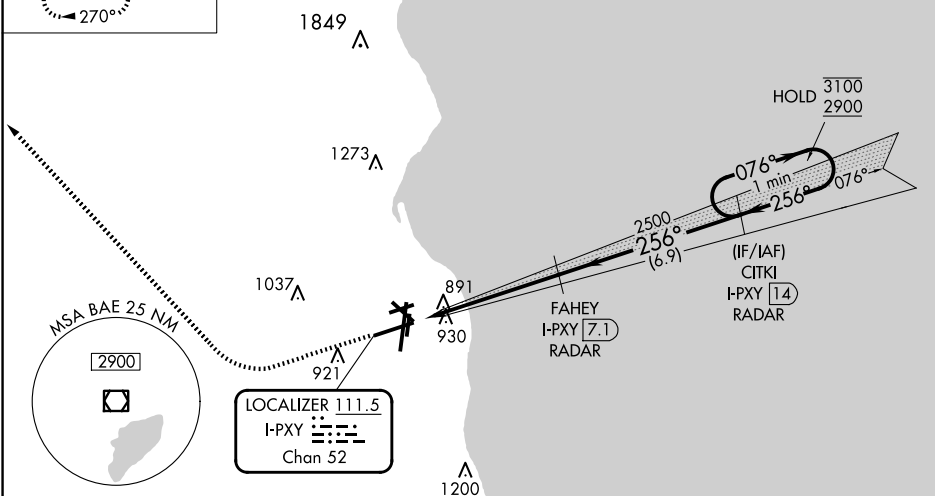
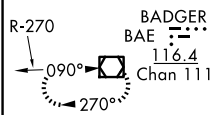
RADAR required for procedure entry. DME or RADAR required.

**T** Rwy 25L helicopter visibility reduction below  $\frac{3}{4}$  SM NA.

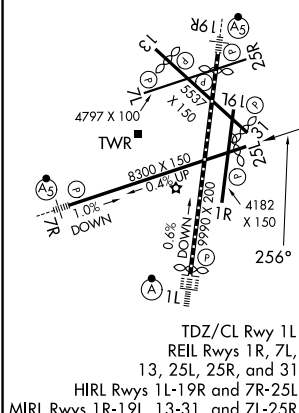
**MISSED APPROACH:** Climb to 2800 then right turn direct BAE VOR/DME and hold.

D-ATIS 126.4	MILWAUKEE APP CON 126.5 307.0	MILWAUKEE TOWER 124.575 269.05	GND CON 121.8 263.125	CLNC DEL 120.8	CPDLC
-----------------	----------------------------------	-----------------------------------	--------------------------	-------------------	-------

MISSED APCH FIX

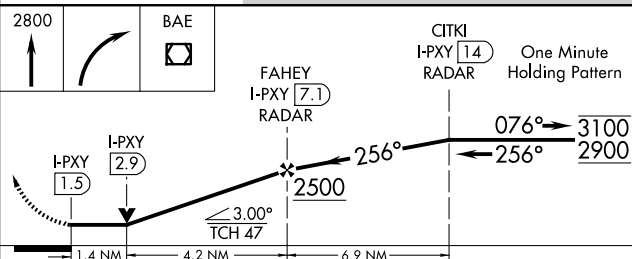



ELEV 729	<b>D</b>	TDZE 683
----------	----------	----------



TDZ/CL Rwy 1L  
REIL Rwys 1R, 7L,  
13, 25L, 25R, and 31  
HIRL Rwys 1L-19R and 7R-25L  
MIRL Rwys 1R-19L, 13-31, and 21-25R

FAF to MAP 5.6 NM					
Knots	60	90	120	150	180
Min:Sec	5:36	3:44	2:48	2:14	1:52



CATEGORY	A	B	C	D
S-LOC 25L	1160-1	477 (500-1)	1160-1 $\frac{3}{8}$	477 (500-1 $\frac{3}{8}$ )
 CIRCLING	1240-1	511 (600-1)	1240-1 $\frac{1}{2}$ 511 (600-1 $\frac{1}{2}$ )	1360-2 631 (700-2)

MILWAUKEE, WISCONSIN  
Amdt 6A 03JAN19

GENERAL MITCHELL INTL (MKE)

42°57'N-87°54'W

LOC RWY 25L