

LOC/DME I-GMF <u>111.5</u> Chan 52	APP CRS 076°	Rwy Ldg 8012 TDZE 729 Apt Elev 729
--	------------------------	---

ILS or LOC RWY 7R
GENERAL MITCHELL INTL (MKE)

RADAR required for procedure entry. DME or RADAR required.

MALSR



MISSED APPROACH: Climb to 2900 then left turn direct BAE VOR/DME and hold.

D-ATIS
126.4

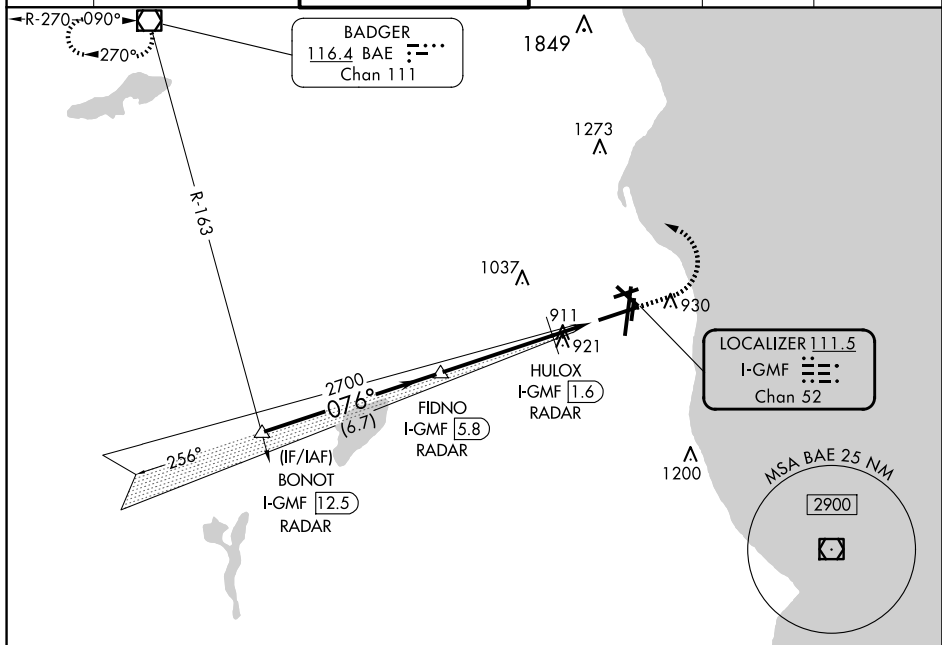
MILWAUKEE APP CON
126.5 307.0

MILWAUKEE TOWER
124.575 269.05

GND CON

CLNC DEL
120.8

CPDLC

[illegible]