

LOC/DME I-BLY 110.3 Chan 40	APP CRS 191°	Rwy 19R Ldg 9205 TDZE 672 Apt Elev 728	Rwy 19L Ldg 4182 TDZE 674 Apt Elev 728
-------------------------------------------------	------------------------	-------------------------------------------------------------------	-------------------------------------------------------------------

ILS or LOC RWY 19R


GENERAL MITCHELL INTL (MKE)

RADAR required for procedure entry, RADAR or DME required for LOC only.

▼

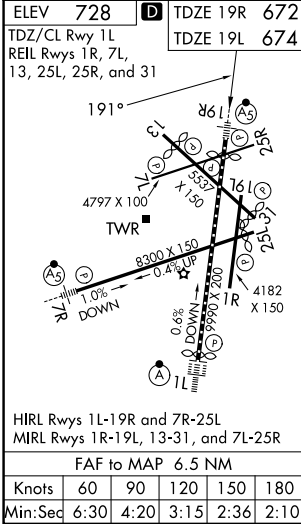
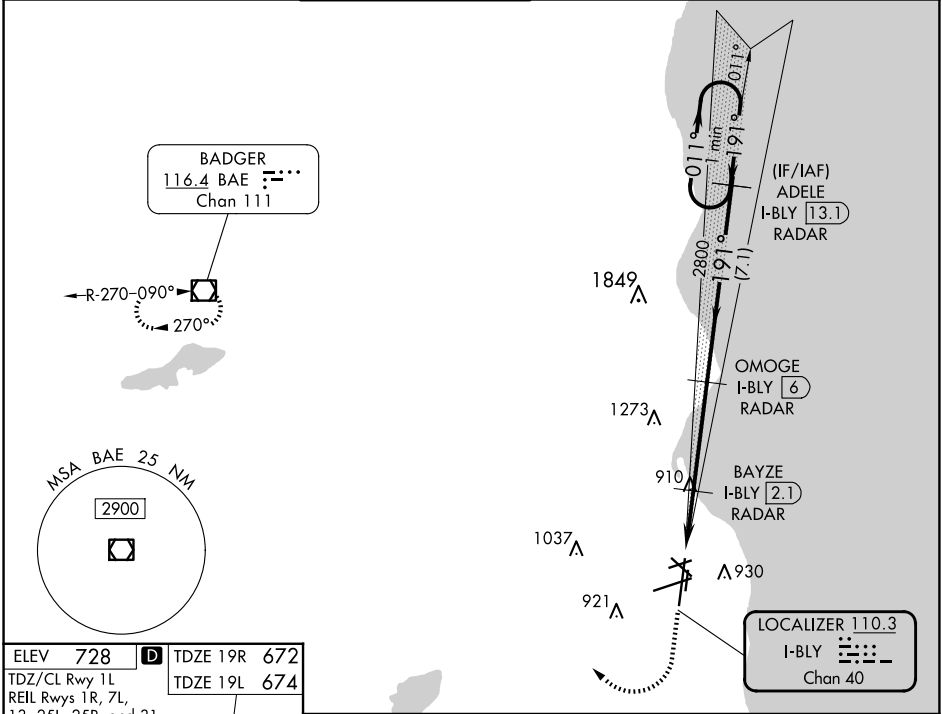
For inop ALS, increase S-LOC 19R Cats C and D visibility to 1½ SM.
*RVR 1800 authorized with use of FD or AP or HUD to DA.

MALSR
Rwy 19R



MISSED APPROACH: Climb to 2800 then right turn direct BAE VOR/DME and hold.

D-ATIS 126.4	MILWAUKEE APP CON 126.5 307.0	MILWAUKEE TOWER 124.575 269.05	GND CON 121.8 263.125	CLNC DEL 120.8	CPDLC
------------------------	-----------------------------------------	------------------------------------------	---------------------------------	--------------------------	-------



2800

BAE

VGSI and ILS glidepath not coincident
(VGSI Angle 3.00/TCH 75).

ADELE

I-BLY **13.1**

RADAR

OMOGE

I-BLY **6**

RADAR

BAYZE

I-BLY **2.1**

RADAR

ANTENNA

I-BLY **0.5**

I-BLY **0.8**

1260

191°

011°

2900

191°

2800

GS 3.00°

TCH 54

1.3 NM

1.3

3.9 NM

7.1 NM

CATEGORY	A	B	C	D
S-ILS 19R*	872/24 200 (200-½)			
S-LOC 19R	1160/24	488 (500-½)	1160/50	488 (500-1)
SIDESTEP 19L	1160-1	486 (500-1)	1160-1½ 486 (500-½)	1160-2 486 (500-2)
CIRCLING	1240-1	512 (600-1)	1240-1½ 512 (600-½)	1360-2 632 (700-2)