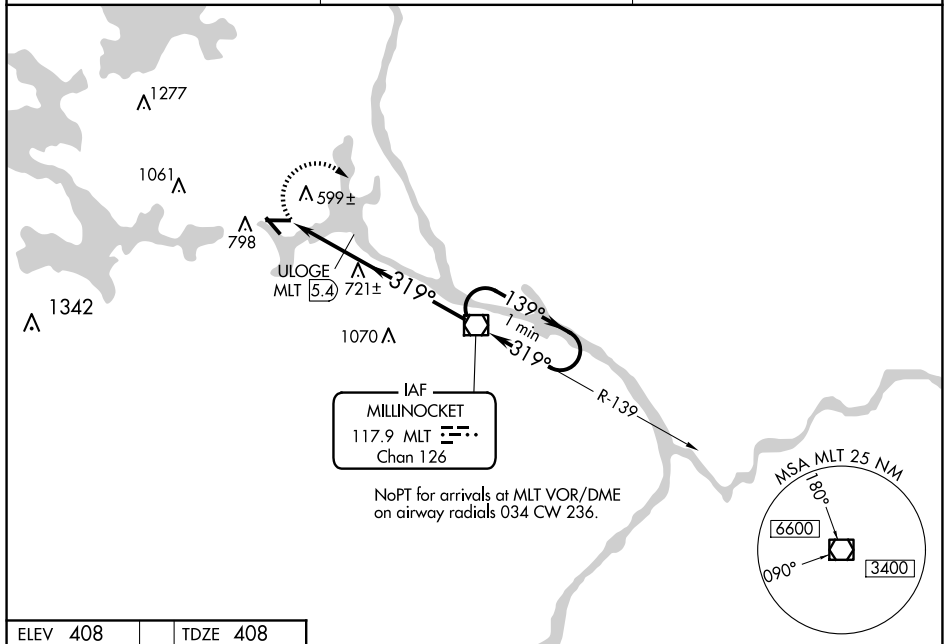


VOR RWY 29
MILLINOCKET MUNI (MLT)

- MISSED APPROACH:** Climbing right turn to 3000 direct MLT VOR/DME and hold, continue climb-in-hold to 3000.

UNICOM
122.8 (CTAF) **L**

3000 MLT *1180 When using Houlton altimeter setting.

One Minute Holding Pattern

3000 MLT

1060*

139°

319°

3000

2.3 NM

5.4 NM

3.14°

TCH 51

CATEGORY	A	B	C	D
S-29	1060-1	652 (700-1)	1060-1 $\frac{3}{4}$ 652 (700-1 $\frac{3}{4}$)	1060-2 652 (700-2)
CIRCLING	1100-1	692 (700-1)	1100-2 692 (700-2)	1380-3 972 (1000-3)

ULOGE FIX MINIMUMS

	A	B	C	D
S-29	880-1	472 (500-1)	880-1 $\frac{1}{4}$ 472 (500-1 $\frac{1}{4}$)	880-1 $\frac{1}{2}$ 472 (500-1 $\frac{1}{2}$)
CIRCLING	1100-1	692 (700-1)	1100-2 692 (700-2)	1380-3 972 (1000-3)

NE-1, 10 JUL 2025 to 07 AUG 2025