

WAAS CH 53628 W29A	APP CRS 287°	Rwy Idg TDZE 408 Apt Elev 408
--	------------------------	---

RNAV (GPS) RWY 29

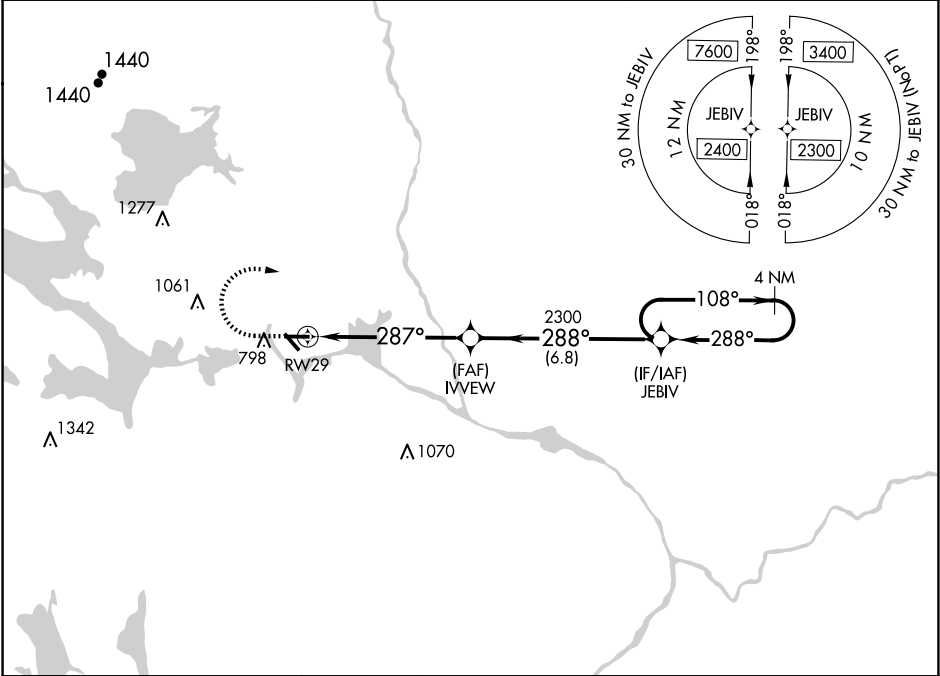
MILLINOCKET MUNI (MLT)

⚠

Baro-VNAV NA when using Houlton altimeter setting. For uncompensated Baro-VNAV systems, LNAV/VNAV NA below -15°C (5°F) or above 41°C (105°F). DME/DME RNP-0.3 NA. Helicopter visibility reduction below ¾ SM NA. When local altimeter setting not received, use Houlton altimeter setting and increase LPV DA to 817 feet and all Cats visibility ¾ SM; increase LNAV/VNAV DA to 935 feet and all Cats visibility ¾ SM; increase all MDAs 120 feet and LNAV Cat C/D visibility ¾ SM, and Circling Cat A/B visibility ¼ SM and Cat C visibility ½ SM. Night landing: Rwy 11, 34 NA.

MISSED APPROACH:
Climb to 920 then climbing right turn to 2300 direct JEBIV and hold.

ASOS 135.225	BOSTON CENTER 120.25 346.4	UNICOM 122.8 (CTAF)
------------------------	--------------------------------------	-------------------------------



ELEV 408

TDZE 408

920

2300

JEBIV

☆

4713 X 99

29

287°

4000 X 100

0.5% UP

24

* LNAV only

RW29

1.5 NM to RW29

287°

IVVEW

2300

288°

108°

2300

288°

4 NM Holding Pattern

GP 3.00°

TCH 51

1.5 NM

4.3 NM

6.8 NM

CATEGORY	A	B	C	D
LPV DA	697-1	289 (300-1)		
LNAV/VNAV DA	815-1½	407 (500-1½)		
LNAV MDA	920-1	512 (600-1)	920-1½	512 (600-1½)
CIRCLING	1100-1	692 (700-1)	1100-2 692 (700-2)	1380-3 972 (1000-3)

MILLINOCKET, MAINE
Amdt 1C 09SEP21

45°39'N-68°41'W

MILLINOCKET MUNI (MLT)
RNAV (GPS) RWY 29