

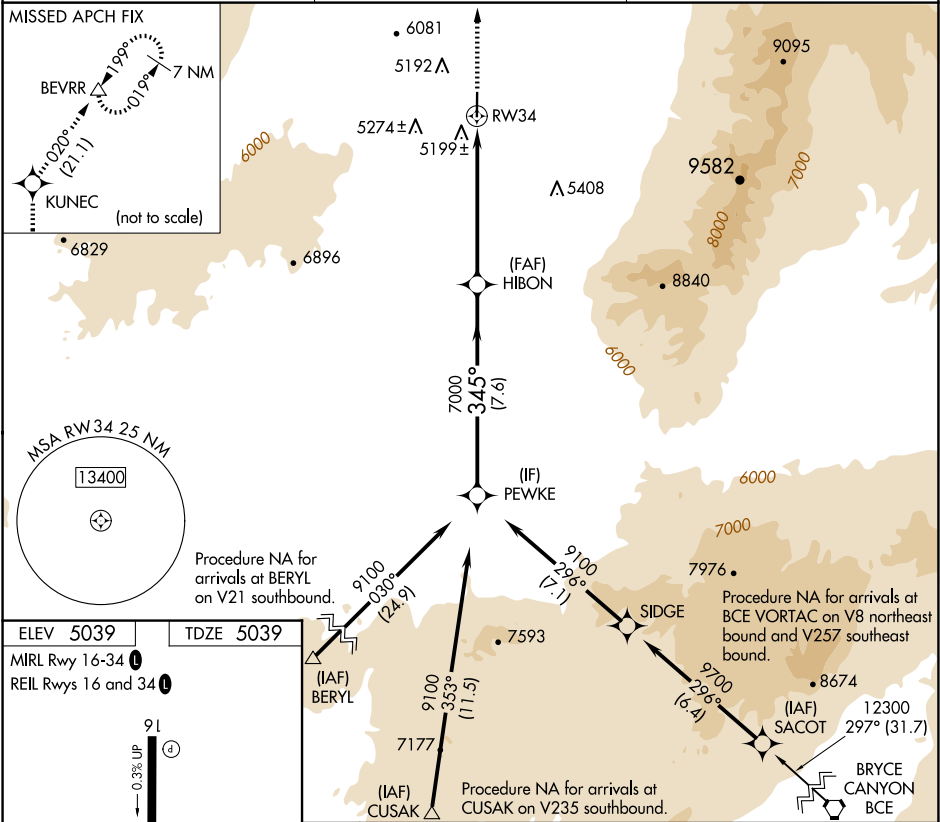
APP CRS	Rwy Ldg	5004
345°	TDZE	5039
	Apt Elev	5039

RNAV (GPS) RWY 34

MILFORD MUNI/BEN AND JUDY BRISCOE FLD (MLF')

RNP APCH.	MISSED APPROACH: Climb to 11000 direct KUNEC and on track 020° to BEVRR and hold, continue climb-in-hold to 11000.
When local altimeter setting not received, use Cedar City altimeter setting and increase all MDA 180 feet; increase LNAV Cat C/D visibility ½ mile.	
-27°C	

ASOS 135.025	SALT LAKE CENTER 125.575 379.275	UNICOM 122.8 (CTAF) 0
-----------------	-------------------------------------	--------------------------



ELEV 5039	TDZE 5039
MIRL Rwy 16-34 0	REIL Rwy 16 and 34 0
91	5004 X 75
0.3% UP	34
345°	
11000	KUNEC
020°	BEVRR
HIBON	PEWKE
RW34	9100
345°	7000
6 NM	7.6 NM
3.00°	TCH 42
CATEGORY	A B C D
LNAV MDA	5460-1 421 (500-1) 5460-1 ¼ 421 (500-1 ¼)

SW-4, 10 JUL 2025 to 07 AUG 2025

SW-4, 10 JUL 2025 to 07 AUG 2025