

MILES CITY, MONTANA

AL-259 (FAA)

23362

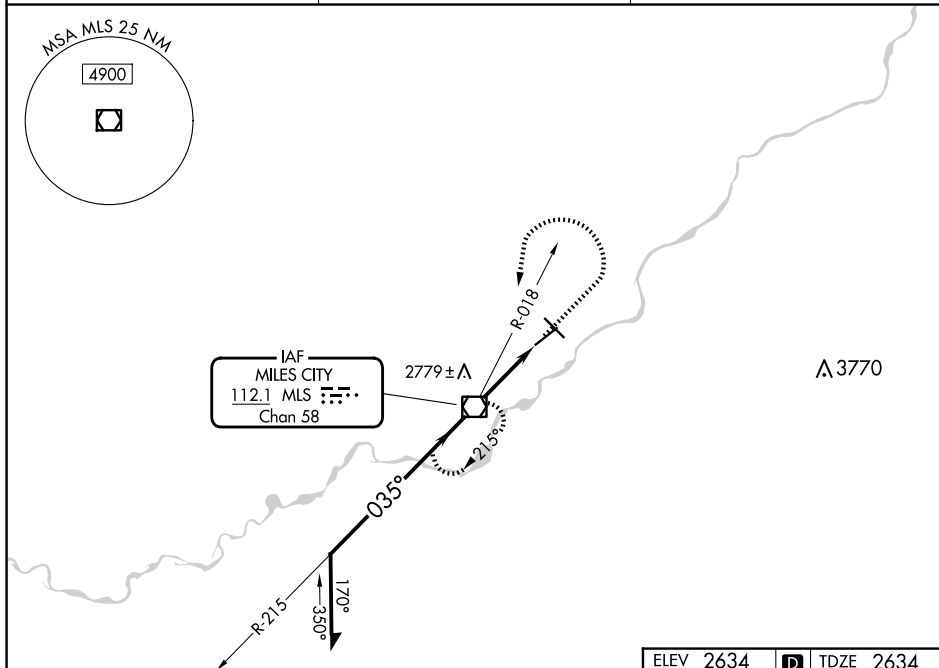
VOR/DME MLS 112.1 Chan 58	APP CRS 035°	Rwy Idg 5764 TDZE 2634 Apt Elev 2634
---	------------------------	---

VOR RWY 4
FRANK WILEY FLD (MLS)

T When local altimeter setting not received, use Glendive
A altimeter setting and increase all MDA 180 feet and
all Cat C and D visibilities $\frac{1}{2}$ SM.

MISSED APPROACH: Climb to 4800. Then climbing left turn to 6000 on heading 210° and MLS R-018 to MLS VOR/DME and hold. Continue climb-in-hold to 6000.

ASOS 135,575	SALT LAKE CENTER 126.85 305.2	UNICOM 123.0 (CTAF) 0
------------------------	---	---------------------------------



ELEV 2634 **D** TDZE 2634

MIRL Rwy 4-22 and 13-31
REIL Rwy 4, 13, 22 and 31

FAF to MAP 3.1 NM

Knots	60	90	120	150	180
Min:Sec	3:06	2:04	1:33	1:14	1:02

MILES CITY, MONTANA

Amdt 14B 28DEC23

46°26'N-105°53'W

FRANK WILEY FLD (MLS)

VOR RWY 4

NW-1, 10 JUL 2025 to 07 AUG 2025

NW-1, 10 JUL 2025 to 07 AUG 2025