

WAAS CH <b>42600</b> <b>W04A</b>	APP CRS <b>043°</b>	Rwy Idg <b>5764</b> TDZE <b>2634</b> Apt Elev <b>2634</b>
--	------------------------	---

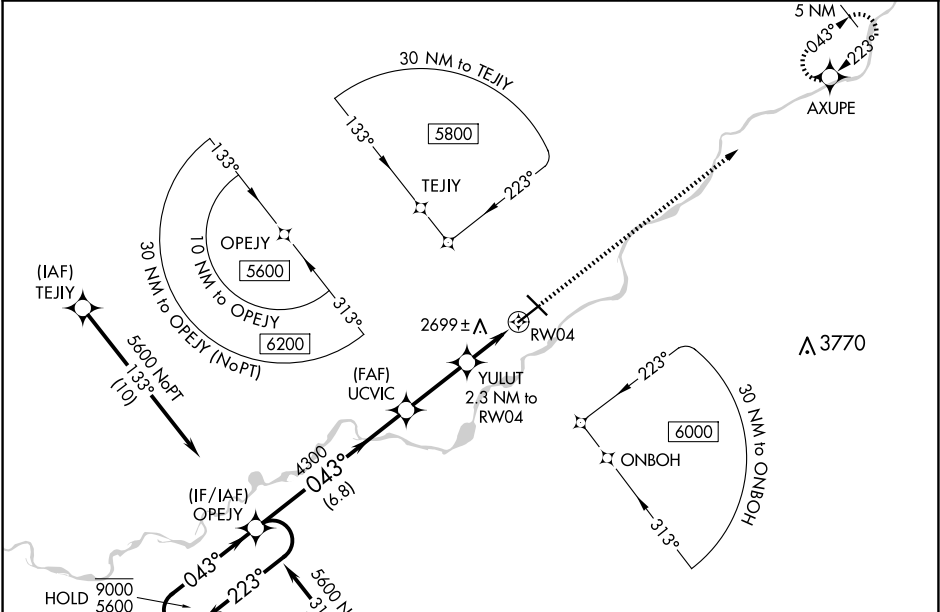
RNAV (GPS) RWY 4  
FRANK WILEY FLD (MLS)

RNP APCH-GPS.

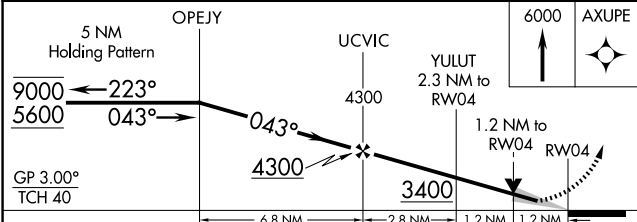
**⚠** For uncompensated Baro-VNAV systems, LNAV/VNAV NA below -25°C or above 54°C. When local altimeter setting not received, use Glendive altimeter setting: increase LPV and LNAV/VNAV DA to 3051 and all visibilities ½ SM. Increase all MDA 180 feet and LNAV Cat C and D visibilities ½ SM and Circling Cat C and D visibilities ½ SM. Baro-VNAV and VDP NA when using Glendive altimeter setting.

MISSED APPROACH: Climb to 6000 direct AXUPE and hold, continue climb-in-hold to 6000.

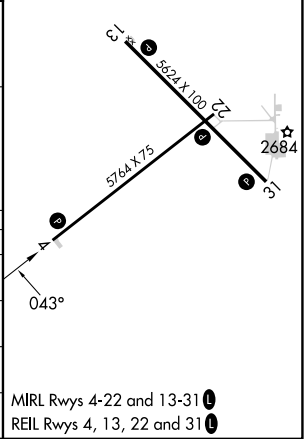
ASOS <b>135.575</b>	SALT LAKE CENTER <b>126.85 305.2</b>	UNICOM <b>123.0 (CTAF) 1</b>
------------------------	---	---------------------------------



ELEV 2634	<b>D</b> TDZE 2634
-----------	--------------------



CATEGORY	A	B	C	D
LPV DA	2884-1		250 (300-1)	
LNAV/VNAV DA	2884-1		250 (300-1)	
LNAV MDA	3040-1	406 (500-1)	3040-1 1/8	406 (500-1 1/8)
<b>C</b> CIRCLING	3060-1 426 (500-1)	3100-1 466 (500-1)	3160-1 1/2 526 (600-1 1/2)	3320-2 1/4 686 (700-2 1/4)



NW-1, 10 JUL 2025 to 07 AUG 2025

NW-1, 10 JUL 2025 to 07 AUG 2025