

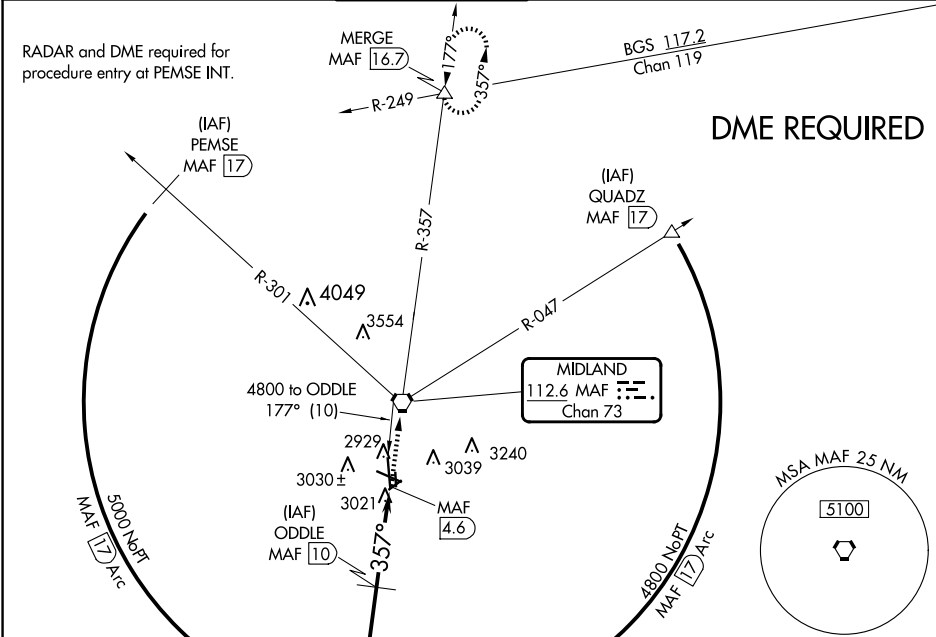
VORTAC MAF <b>112.6</b> Chan <b>73</b>	APP CRS <b>357°</b>	Rwy Ldg TDZE Apt Elev <b>9501</b> <b>2858</b> <b>2872</b>
--	------------------------	--

VOR or TACAN RWY 34L  
MIDLAND INTL AIR AND SPACE PORT (MAF)

**⚠** Circling Rwy 16L NA at night. Rwy 34L helicopter visibility reduction below ¾ SM NA. DME required.

MISSED APPROACH: Climb to 4800 direct MAF VORTAC and on MAF VORTAC R-357 to MERGE INT/MAF 16.7 DME and hold.

ATIS <b>126.8 235.975</b>	MIDLAND APP CON ★ <b>124.6 290.4</b>	MIDLAND TOWER ★ <b>118.7 (CTAF) 0273.45</b>	GND CON <b>121.9 348.6</b>	CLNC DEL <b>118.05 317.65</b>	UNICOM <b>122.95</b>
------------------------------	---	--	-------------------------------	----------------------------------	-------------------------



ELEV 2872 **D** TDZE 2858

Remain within 10 NM

ODDLE MAF 10

4800

MAF

MAF R-357

MERGE

ROVCO MAF 17

4800

357°

4800

357°

4600

2.96°

TCH 50

7 NM

4.1 NM

1.3 NM

CATEGORY	A	B	C	D	E
S-34L	3320-1	462 (500-1)	3320-1 3/8	462 (500-1 3/8)	
CIRCLING	3440-1	568 (600-1)	3440-1 1/2 568 (600-1 1/2)	3520-2 648 (700-2)	3600-2 1/2 728 (800-2 1/2)

REIL Rwy 34L

MIRL Rwy 4-22 and 16L-34R

HIRL Rwy 10-28 and 16R-34L