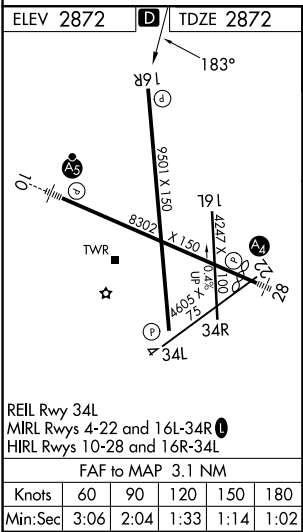
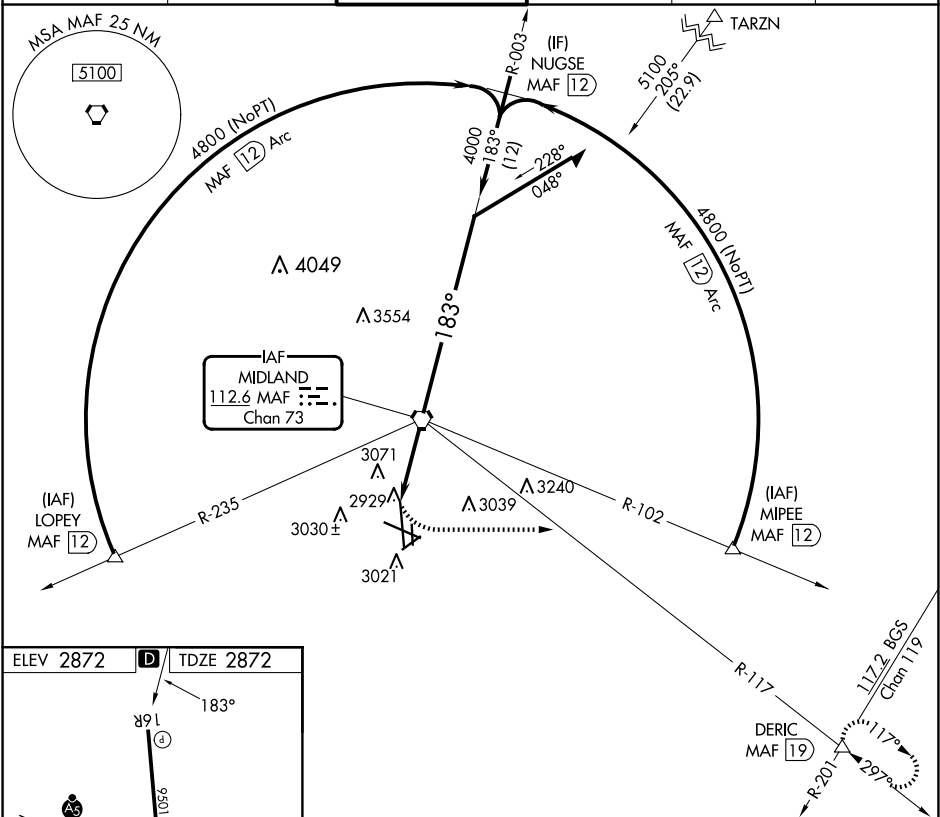


VORTAC MAF 112.6 Chan 73	APP CRS 183°	Rwy Ldg TDZE Apt Elev 9501 2872 2872
--	------------------------	--

VOR or TACAN RWY 16R
MIDLAND INTL AIR AND SPACE PORT (MAF)

⚠ Rwy 16R helicopter visibility reduction below ¾ SM NA. Circling Rwy 16L NA at night.	MISSED APPROACH: Climbing left turn to 4800 on heading 090° and on MAF VORTAC R-117 to DERIC INT/MAF 19 DME and hold.
--	---

ATIS 126.8 235.975	MIDLAND APP CON ★ 124.6 290.4	MIDLAND TOWER ★ 118.7 (CTAF) 0273.45	GND CON 121.9 348.6	CLNC DEL 118.05 317.65	UNICOM 122.95
------------------------------	---	--	-------------------------------	----------------------------------	-------------------------



4800	MAF R-117	DERIC	VGSi and descent angles not coincident (VGSi Angle 3.00/TCH 50).			Remain within 10 NM
hdg 090°			MAF VORTAC	003°	5100	
	MAF 3.1	MAF 1.6	4000	183°		Procedure turn not authorized for Cat E.
	1.5 NM	1.6 NM				
CATEGORY	A	B	C	D	E	
S-16R	3400-1	528 (600-1)	3400-1½	528 (600-1½)		
CIRCLING	3440-1	568 (600-1)	3440-1½ 568 (600-1½)	3520-2 648 (700-2)	3600-2½ 728 (800-2½)	

SC-3, 10 JUL 2025 to 07 AUG 2025

SC-3, 10 JUL 2025 to 07 AUG 2025