

25163

WAAS CH 90529 W04A	APP CRS 045°	Rwy Ldg 4605 TDZE 2851 Apt Elev 2872
--	------------------------	---

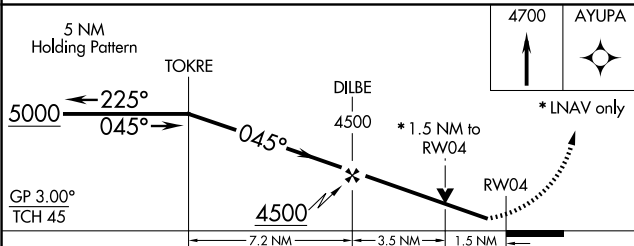
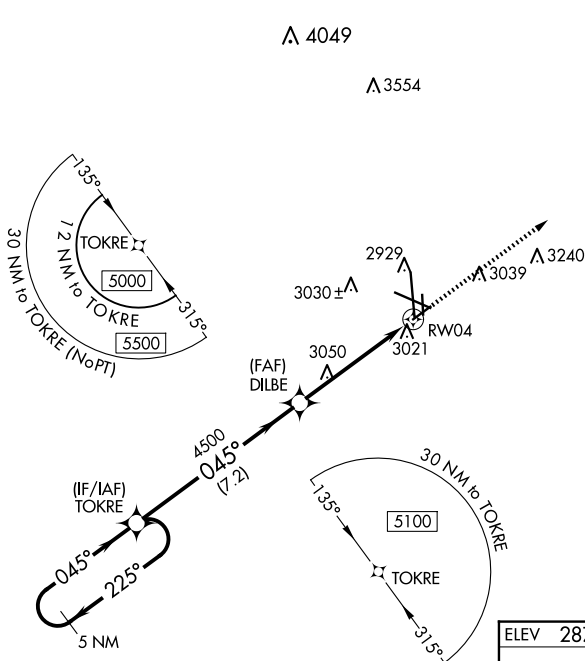
RNAV (GPS) RWY 4

MIDLAND INTL AIR AND SPACE PORT (MAF)

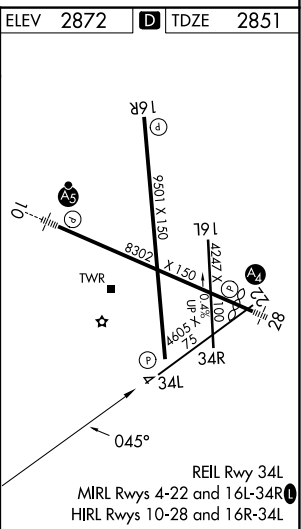
T For uncompensated Baro-VNAV systems, LNAV/VNAV NA below -11°C (13°F) or above 25°C (77°F). Circling Rwy 16L NA at night. Rwy 4 helicopter visibility reduction below $\frac{3}{4}$ SM NA. DME/DME RNP-0.3 NA.

MISSED APPROACH: Climb to 4700 direct AYUPA and hold.

ATIS	MIDLAND APP CON★	MIDLAND TOWER★	GND CON	CLNC DEL	UNICOM
126.8 235.975	124.6 290.4	118.7 (CTAF) 0 273.45	121.9 348.6	118.05 317.65	122.95



CATEGORY		A	B	C	D
LPV	DA	3051 ^{-3/4} 200 (200 ^{-3/4})			
LNAV/ VNAV	DA	3283-1 ^{1/2} 432 (500-1 ^{1/2})			
LNAV	MDA	3360-1 509 (500-1)		3360-1 ^{3/8} 509 (500-1 ^{3/8})	
CIRCLING		3440-1 568 (600-1)		3440-1 ^{1/2} 568 (600-1 ^{1/2})	3520-2 648 (700-2)



MIDLAND, TEXAS
Amdt 1C 22JUN17

MIDLAND INTL AIR AND SPACE PORT (MAF)

31°57'N-102°12'W

RNAV (GPS) RWY 4

SC-3, 10 JUL 2025 to 07 AUG 2025