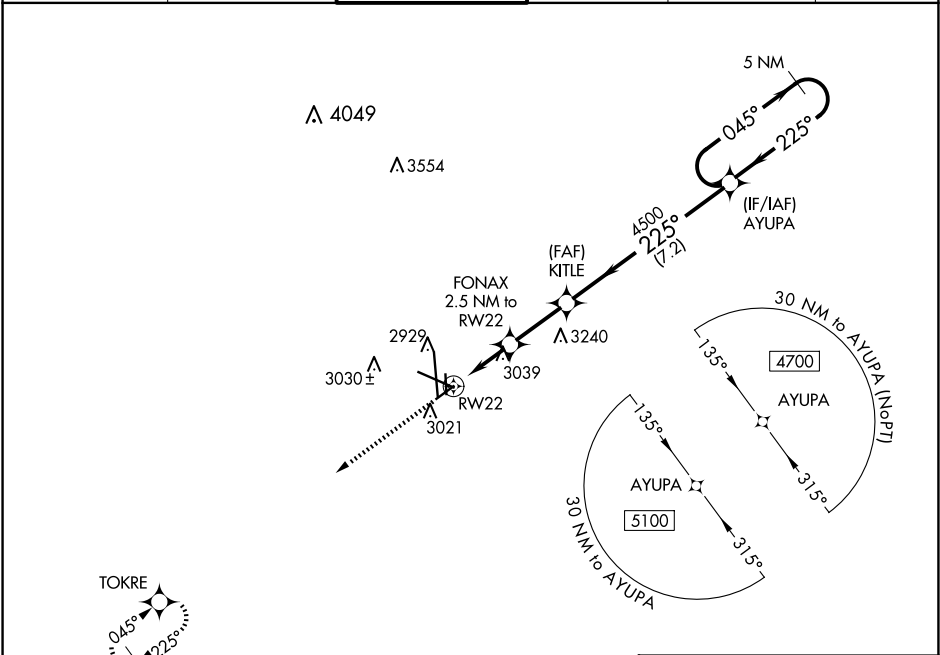


WAAS CH 50429 W22A	APP CRS 225°	Rwy Ldg TDZE 2855 Apt Elev 2872
--	------------------------	---

RNAV (GPS) RWY 22
MIDLAND INTL AIR AND SPACE PORT (MAF)

RNP APCH.		MISSED APPROACH: Climb to 5000 direct TOKRE and hold.		
▼ For uncompensated Baro-VNAV systems, LNAV/VNAV NA below -11°C or above 25°C. Circling Rwy 16L NA at night.				
ATIS 126.8 235.975	MIDLAND APP CON* 124.6 290.4	MIDLAND TOWER* 118.7 (CTAF) 273.45	GND CON 121.9 348.6	CLNC DEL 118.05 317.65
				UNICOM 122.95



ELEV 2872 D TDZE 2855	
<div><div><div>5000</div><div>TOKRE</div></div><div>*LNAV only</div><div><div><div><div>RW22</div><div>FONAX 2.5 NM to RW22</div><div>KITLE 4500</div><div>AYUPA</div></div><div><div>1.3 NM to RW22</div><div>2.5 NM</div><div>7.2 NM</div></div><div><div>5 NM Holding Pattern</div><div>4700</div><div>GP 3.00° TCH 50</div></div></div></div></div>	
CATEGORY	A B C D
LPV DA	3055-3/4 200 (200-3/4)
LNAV/VNAV DA	3317-13/8 462 (500-13/8)
LNAV MDA	3320-1 465 (500-1) 3320-13/8 465 (500-13/8)
CIRCLING	3440-1 568 (600-1) 3440-11/2 568 (600-11/2) 3520-2 648 (700-2)

891

9501 X 150

191

4247 X 150

4605 X 150

34R

34L

TWR

REIL Rwy 34L

MIRL Rwy 4-22 and 16L-34R

HIRL Rwy 10-28 and 16R-34L

SC-3, 10 JUL 2025 to 07 AUG 2025

SC-3, 10 JUL 2025 to 07 AUG 2025