

ILS or LOC RWY 10
MIDLAND INTL AIR AND SPACE PORT (MAF)

MALSR

A5

+

-

MISSED APPROACH: Climb to 4900 on heading 105° and on MAF VORTAC R-117 to DERIC INT/MAF 19 DME and hold.

ATIS	MIDLAND APP CON★	MIDLAND TOWER★	GND CON	CLNC DEL	UNICOM
126.8 235.975	124.6 290.4	118.7 (CTAF) 0 273.45	121.9 348.6	118.05 317.65	122.95

ALTERNATE
MISSED APCH FIX

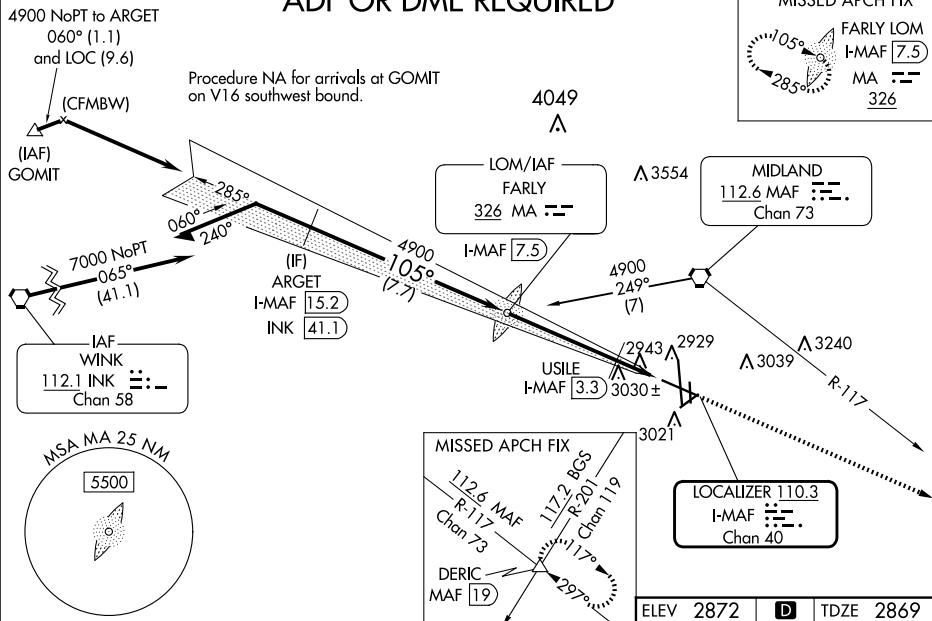
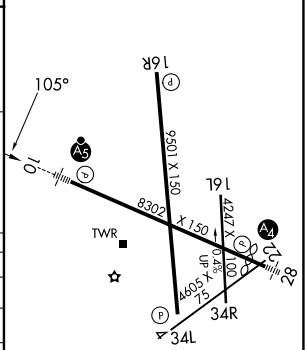


Diagram illustrating a missed approach procedure. The flight path starts at 4900 feet, heading 105°, and turns 285° to 4884 feet. A missed approach procedure is initiated at 4884 feet, with a climb to 4900 feet and a turn to 105°. The missed approach procedure is labeled "EARLY LOM" and "I-MAF 7.5". The missed approach procedure is also labeled "USILE" and "I-MAF 3.3". The missed approach procedure is also labeled "I-MAF 1.5". The missed approach procedure is also labeled "3460". The missed approach procedure is also labeled "4.3 NM" and "1.8 NM". The missed approach procedure is also labeled "GS 3.00°" and "TCH 54". The missed approach procedure is also labeled "4900" and "4884". The missed approach procedure is also labeled "285°" and "105°". The missed approach procedure is also labeled "HDG 105°" and "MAF R-117". The missed approach procedure is also labeled "DERIC" and "LOC only".



CATEGORY	A	B	C	D	E
S-ILS 10 **	3069/24 200 (200-½)				
S-LOC 10	3460/24	591 (600-½)	3460-1¼	591 (600-1¼)	
CIRCLING	3460-1	588 (600-1)	3460-1¾ 588 (600-1¾)	3520-2 648 (700-2)	3600-2½ 728 (800-2½)
USILE FIX MINIMUMS					
S-LOC 10	3420/24	551 (600-½)	3420/60	551 (600-1¼)	
CIRCLING	3440-1	568 (600-1)	3440-1⅝ 568 (600-1⅝)	3520-2 648 (700-2)	3600-2½ 728 (800-2½)

REIL Rwy 34L MIRL Rwys 4-22 and 16L-34R L HIRL Rwys 10-28 and 16R-34L					
FAF to MAP 6.1 NM					
Knots	60	90	120	150	180
Min:Sec	6:06	4:04	3:03	2:26	2:02

SC-3, 10 JUL 2025 to 07 AUG 2025