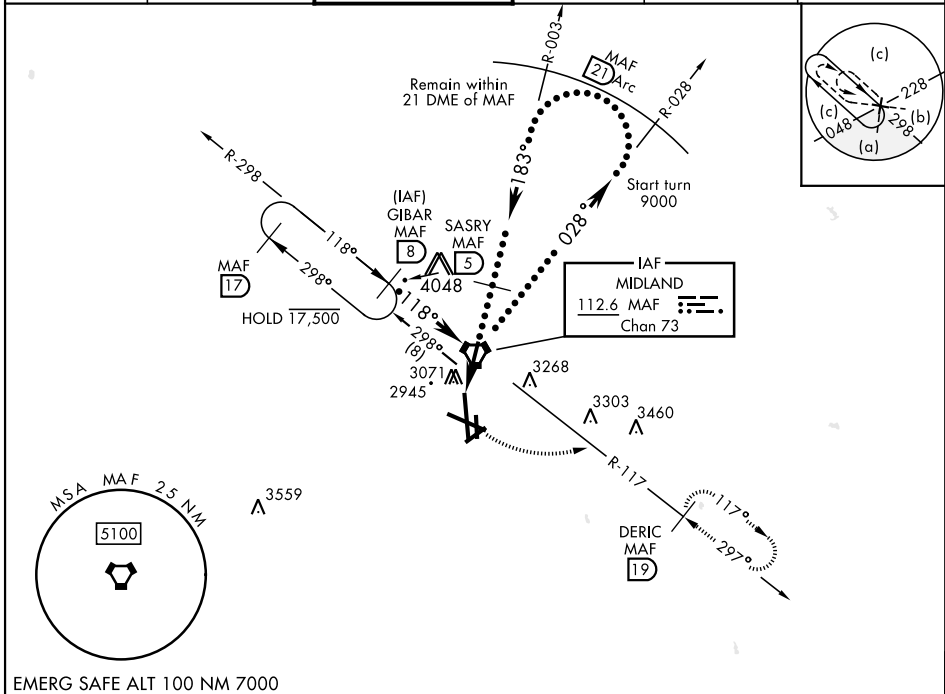


HI-VOR or TACAN RWY 16R

VORTAC MAF 112.6 Chan 73	APCH CRS 183°	Rwy ldg TDZE 2872 Arprt Elev 2872	[USAF]	MIDLAND INTL AIR AND SPACE PORT (KMAF)
--------------------------------	------------------	---	--------	--

DME required	MISSED APPROACH: Climb to 3500 then climbing left turn to 4800 on MAF VORTAC R-117 to DERIC/MAF 19 DME and hold.
* Circling Rwy 16L not authorized at night.	

ATIS ★ 126.8 235.975	APP CON ★ 124.6 290.4	TOWER ★ 118.7(CTAF) 273.45	GND CON 121.9 348.6	CLNC DEL 118.05 317.65	UNICOM 122.95
-------------------------	--------------------------	-------------------------------	------------------------	---------------------------	------------------



EMERG SAFE ALT 100 NM 7000			ELEV 2872 D TDZE 2872	
VGSI and descent angles not coincident			Rwy 10 ldg 8177' Rwy 28 ldg 7610'	
GIBAR MAF 8			DERIC MAF 19	
14,000 118° 14,000 028°			3020 A 183°	
MAF 3.1 1.3			2902 A 2899 A 2901 x 150	
SASRY MAF 5			2888 A 2949 A 2902 x 150	
4000 4600			2878 A 34L	
3.1 NM			2974 A 3025 A 2976 A 2874 A 34R	
CATEGORY C D E			HIRL Rwy 10-28, 16R-34L	
S-16R 3400-1½ 528 (600-1½)			MIRL Rwy 4-22, 16L-34R	
CIRCUING* 3440-1½ 568 (600-1½) 3520-2 648 (700-2) 3600-2½ 728 (800-2½)			REIL Rwy 34L	

HI-VOR or TACAN RWY 16R