


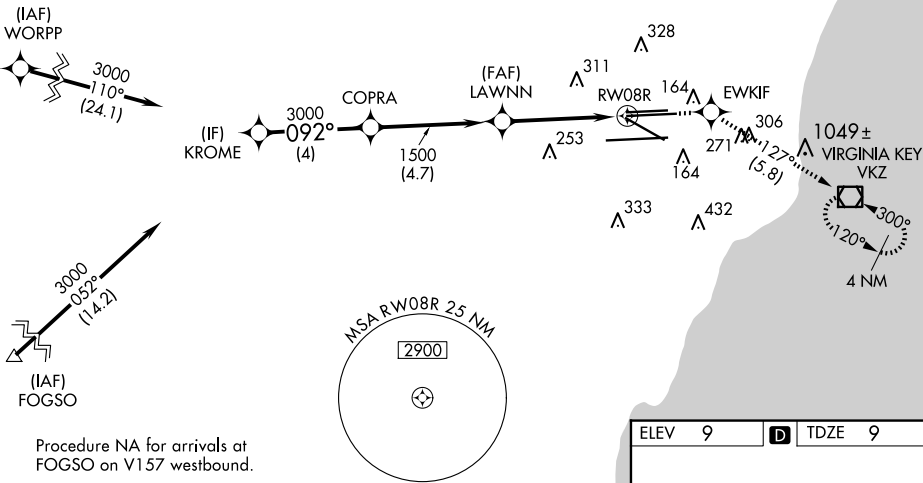
WAAS CH 97404 W08B	APP CRS 092°	Rwy Idg 10506 TDZE 9 Apt Elev 9
--	------------------------	--

RNAV (GPS) Z RWY 8R

MIAMI INTL (MIA)

RNP APCH-GPS.					MALSR		MISSED APPROACH: Climb to 3000 direct EWKIF and on track 127° to VKZ VOR/DME and hold, continue climb in-hold to 3000.	
▼ Rwy 8R helicopter visibility reduction below RVR 4000 NA. For uncompensated Baro-VNAV systems, LNAV/VNAV NA below 8°C or above 54°C. For inop ALS, increase LPV all Cats visibility to RVR 4500 and LNAV Cats A and B visibility to RVR 5500.								
D-ATIS ARR 119.15 133.675		MIAMI APP CON 124.85 322.3	MIAMI TOWER 118.3 256.9	GND CON 121.8 (8L/8R/12/26L/26R) 127.5 (9/27/30)		348.6	CLNC DEL 135.35	CPDLC

Procedure NA for arrivals at WORPP
on V35 westbound and on V529 northwest bound.



Procedure NA for arrivals at FOGSO on V157 westbound.

ELEV 9	D	TDZE 9
--------	----------	--------

VGSI and RNAV glidepath not coincident (VGSI Angle 3.00/TCH 77).				
KROME	COPRA	LAWNN	tr 127°	VKZ
3000	092°	1500		
GP 3.00° TCH 51	3000	092°	1.6 NM to RW08R	
	1500			
4 NM	4.7 NM	2.9 NM	1.6 NM	
CATEGORY	A	B	C	D
LPV DA	277/40 268 (300-¾)			
LNAV/VNAV DA	531/55 522 (600-1)			
LNAV MDA	600/40 591 (600-¾)		600-1¼ 591 (600-1¼)	

