

MIAMI, FLORIDA

AL-257 (FAA)

24137

WAAS CH 40205 W27A	APP CRS 272°	Rwy Idg 12755 TDZE 9 Apt Elev 9
--	------------------------	--

RNAV (GPS) Y RWY 27

MIAMI INTL (MIA)

RNP APCH-GPS.

T Simultaneous approach authorized. LNAV procedure NA during simultaneous operations. Use of FD or AP required during simultaneous operations. For uncompensated Baro-VNAV systems, LNAV/VNAV NA below 8°C or above 54°C. *RVR 1800 authorized with use of FD or AP or HUD to DA.

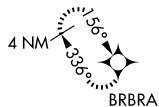
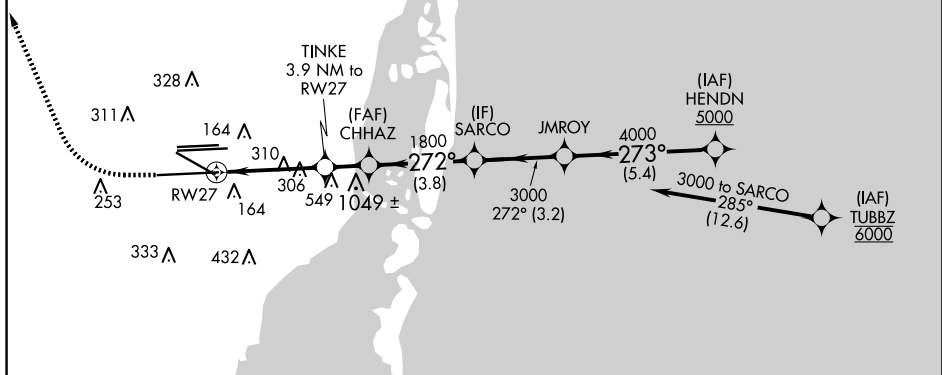
MALS



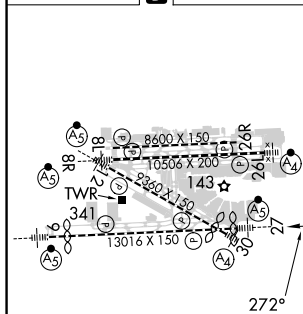
MISSED APPROACH: Climb to 800 then climbing right turn to 4000 direct BRBRA and hold, continue climb-in-hold to 4000.

D-ATIS	MIAMI APP CON	MIAMI TOWER	GND CON		CLNC DEL	CPDLC
ARR DEP	119.15 133.675	124.85 322.3	118.3 256.9	121.8 (8L/8R/12/26L/26R) 127.5 (9/27/30)	348.6 135.35	

MISSED APCH FIX


$$\begin{array}{c} \Delta^{1049} \\ \Delta^{1049} \Delta^{1049} \\ \Delta^{1049} \end{array}$$


ELEV	9	D	TDZE	9
------	---	----------	------	---



TDZ/CL Rwy 8R
REIL Rws 8L and 26R
HIRL all Rws

Diagram illustrating the VGSI and RNAV glidepath for RW27. The glidepath is defined by a 273° angle. Key points and distances are marked:

- 1.5 NM to RW27
- 1.5 NM to CHHAZ (1800)
- 3.9 NM to TINKE
- 3.8 NM to SARCO
- 3.2 NM to HENDN (5000)
- 5.4 NM to GP 3.00° TCH 55

Altitudes marked along the path: 1300, 1800, 3000, 4000, 5000.

CATEGORY	A	B	C	D
LPV DA*	209/24	200 (200-½)		
LNNAV/ VNAV DA	439/40	430 (500-¾)		
LNNAV MDA	560/24 551 (600-½)		560/60 551 (600-1¼)	

MIAMI, FLORIDA

Amdt 4 12AUG21

25°48'N-80°17'W

MIAMI INTL (MIA)

RNAV (GPS) Y RWY 27

SE-3, 10 JUL 2025 to 07 AUG 2025