

MIAMI, FLORIDA

AL-257 (FAA)

24137

WAAS CH 81905 W26B	APP CRS 272°	Rwy Idg 10220 TDZE 9 Apt Elev 9
--	------------------------	--

RNAV (GPS) Y RWY 26L

MIAMI INTL (MIA)

RNP APCH - GPS.

T Simultaneous approach authorized. LNAV procedure NA during simultaneous operations. Inop table does not apply to LPV all Cats. For uncompensated Baro-VNAV systems, LNAV/VNAV NA below 9°C or above 54°C.

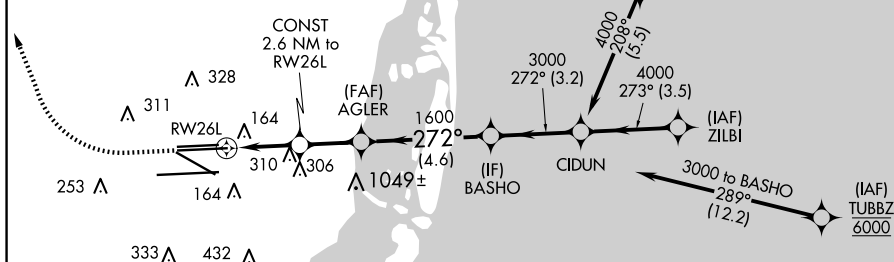
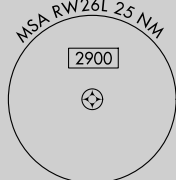
MALSF



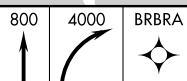
MISSED APPROACH: Climb to 800 then climbing right turn to 4000 direct BRBRA and hold, continue climb-in-hold to 4000.

D-ATIS	MIAMI APP CON		MIAMI TOWER		GND CON		CLNC DEL	CPDLC
ARR DEP	119.15 133.675	124.85 322.3	118.3 256.9	121.8 (Rwys 8L/R, 12, 26L/R) 127.5 (Rwys 9, 27, 30)	348.6	135.35		

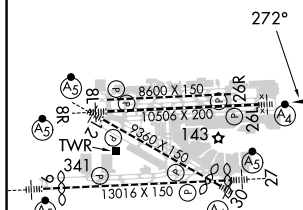
MISSED APCH FIX


$$\begin{array}{c} 1049 \quad \wedge 1049 \\ \wedge \wedge 1049 \\ \wedge \quad 1049 \end{array}$$


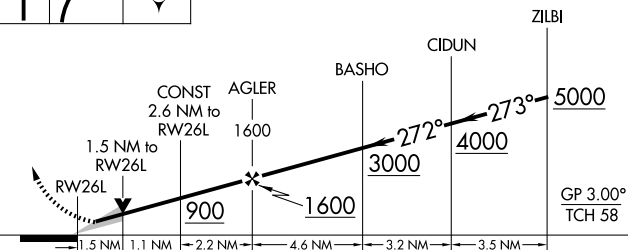
ELEV	9	D	TDZE	9
------	---	----------	------	---



VGSI and RNAV glidepath not coincident (VGSI Angle 3.00/TCH 73).



TDZ/CL Rwy 8R
REIL Rwys 8L and 26R
HRL all Rwys



CATEGORY	A	B	C	D
LPV DA	209/40	200 (200-3/4)		
LNAV/ VNAV DA	348/40	339 (400-3/4)		
LNAV MDA	560/40 551 (600-3/4)	560-13/8 551 (600-13/8)		

MIAMI, FLORIDA
Amdt 4 14JUL22

25°48'N-80°17'W

MIAMI INTL (MIA)

RNAV (GPS) Y RWY 26L

SE-3, 10 JUL 2025 to 07 AUG 2025