


APP CRS	Rwy Idg	10506
092°	TDZE	8
	Apt Elev	9

RNAV (RNP) Y RWY 8R  
MIAMI INTL (MIA)

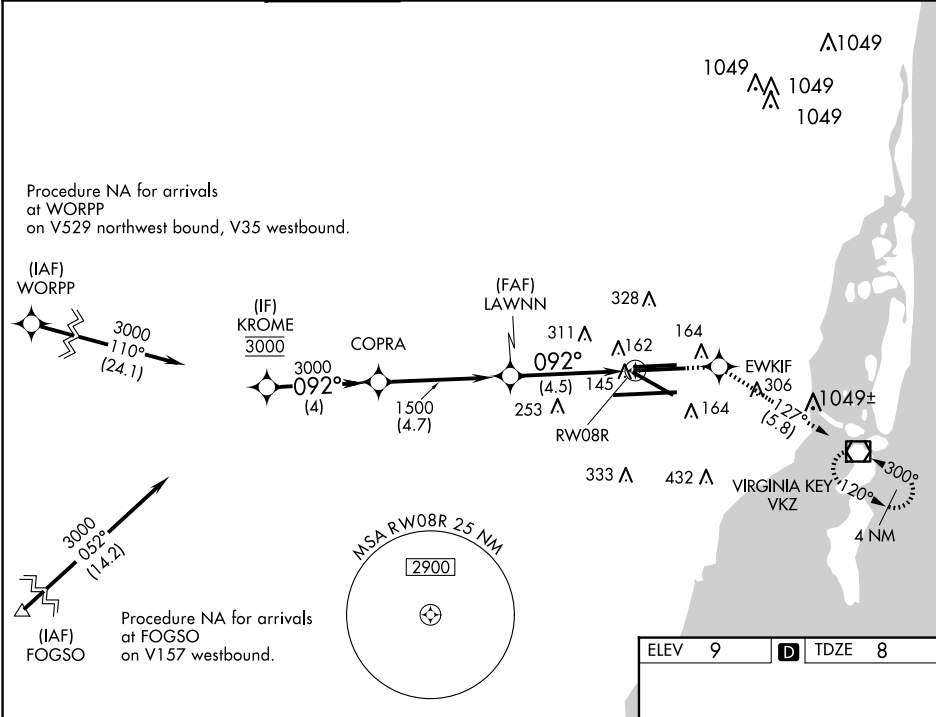
**⚠** For uncompensated Baro-VNAV systems, procedure NA below 6°C (43°F) or above 54°C (130°F). GPS required. For inop MALSR, increase RNP 0.11 all Cats visibility to 1¼ mile.  
\*Missed approach requires minimum climb of 330 feet per NM to 600.

MALSR



MISSED APPROACH: Climb to 3000 direct EWKIF and on track 127° to VKZ VOR/DME and hold, continue climb-in-hold to 3000.

D-ATIS	MIAMI APP CON	MIAMI TOWER	GND CON	CLNC DEL	CPDLC
ARR 119.15	124.85 322.3	118.3 256.9	121.8 (8L/8R/12/26L/26R)	135.35	
DEP 133.675			127.5 (9/27/30)	348.6	



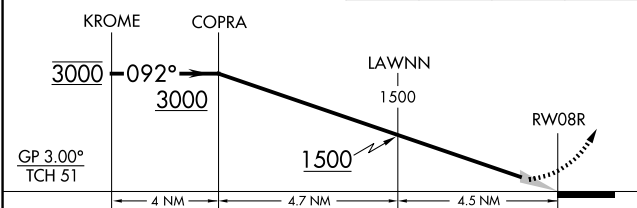
VGSI and RNAV glidepath not coincident (VGSI Angle 3.00/TCH 77).

3000

EWKIF

tr 127°

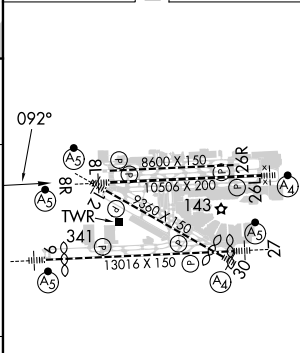
VKZ



CATEGORY	A	B	C	D
*RNP 0.11 DA		397/45	389 (400-7/8)	
RNP 0.30 DA		458/50	450 (500-1)	

AUTHORIZATION REQUIRED

ELEV 9	TDZE 8
--------	--------



TDZ/CL Rwy 8R  
REIL Rwy 8L and 26R  
HIRL all Rwy 8

SE-3, 10 JUL 2025 to 07 AUG 2025

SE-3, 10 JUL 2025 to 07 AUG 2025