

MIAMI, FLORIDA

AL-257 (FAA)

24137

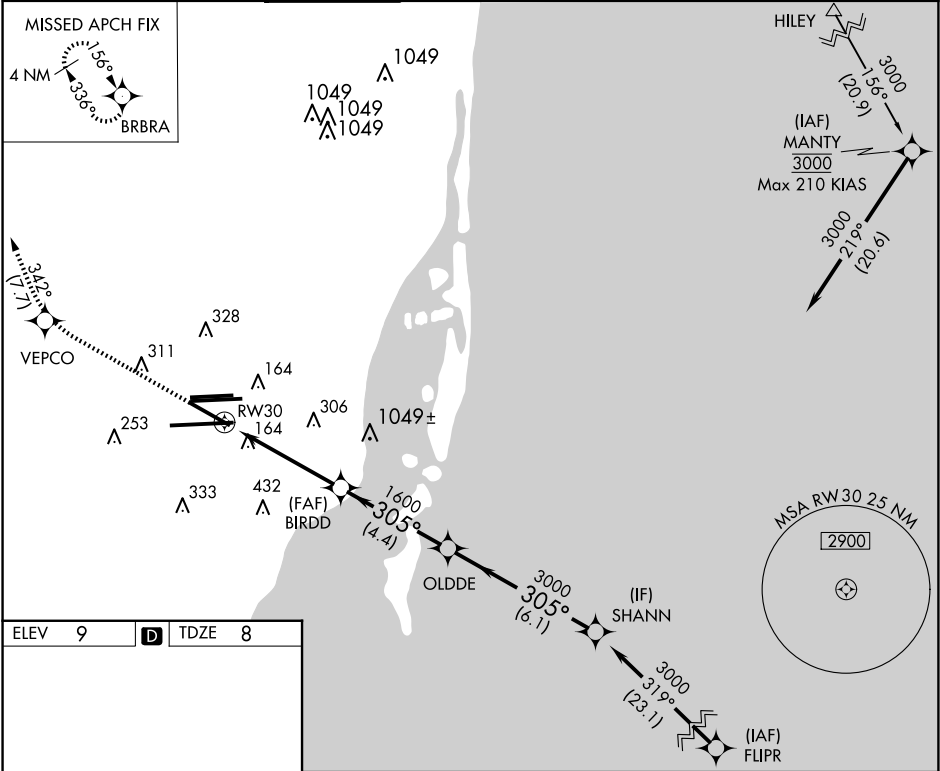
APP CRS	Rwy Idg	7913
305°	TDZE	8
	Apt Elev	9

RNAV (RNP) Y RWY 30

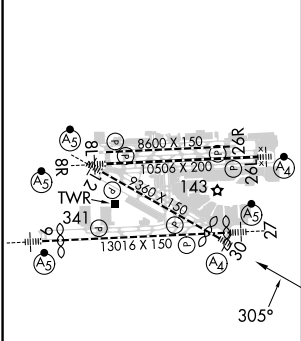
MIAMI INTL (MIA)

<p>V For inoperative MALS, increase RNP 0.23 all Cats visibility to 1½, RNP 0.30 all Cats to 1¾. GPS Required. For uncompensated Baro-VNAV systems, procedure NA below 6°C (42°F) or above 48°C (119°F).</p>	<p>MALS</p> <p>(A4)</p>	<p>MISSED APPROACH: Climb to 3000 direct VEPCO and via 342° track to BRBRA and hold.</p>
---	--------------------------------	--

D-ATIS	MIAMI APP CON	MIAMI TOWER	GND CON	CLNC DEL	CPDLC
ARR 119.15 DEP 133.675	124.85 322.3	118.3 256.9	121.8 (8L/8R/12/26L/26R) 127.5 (9/27/30)	348.6	135.35



ELEV 9	D	TDZE 8
--------	----------	--------



TDZ/CL Rwy 8R
REIL Rwys 8L and 26R
HIRL all Rwys

3000	VEPCO	342° tr	BRBRA	VGSI and RNAV glidepath not coincident (VGSI Angle 3.00/TCH 71).	Procedure Turn NA
OLDDE	SHANN	305°	3000	GP 3.00° TCH 51	
RW30	BIRDD	1600	3000		
4.8 NM	4.4 NM	6.1 NM			
CATEGORY	A	B	C	D	
RNP 0.23 DA	426-1¼	418 (500-1¼)			
RNP 0.30 DA	521-1½	513 (600-1½)			

AUTHORIZATION REQUIRED

MIAMI, FLORIDA
Orig-A 30JUN11

25°48'N-80°17'W

RNAV (RNP) Y RWY 30

SE-3, 10 JUL 2025 to 07 AUG 2025