

MIAMI, FLORIDA

AL-257 (FAA)

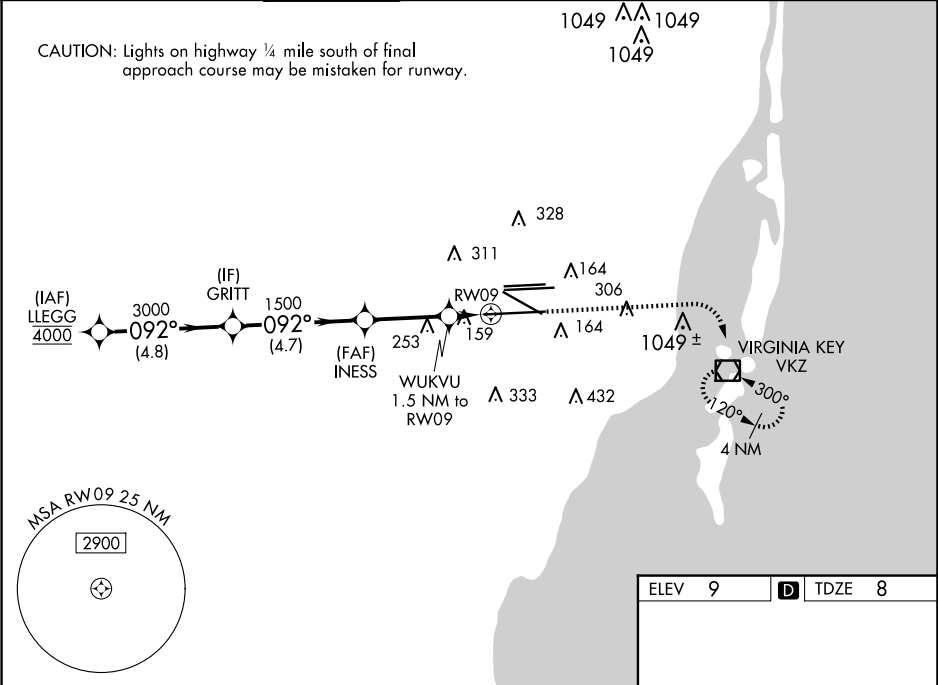
24137

WAAS CH <b>81931</b> <b>W09A</b>	APP CRS <b>092°</b>	Rwy Idg <b>11397</b> TDZE <b>8</b> Apt Elev <b>9</b>
--	------------------------	--

RNAV (GPS) RWY 9  
MIAMI INTL (MIA)

RNP APCH - GPS.		<div>MALSR</div> <div></div>	<div>MISSED APPROACH: Climb to 800 then climbing right turn to 3000 direct VKZ VOR/DME and hold, continue climb-in-hold to 3000.</div>
<div>▼</div> <div>For uncompensated Baro-VNAV systems, LNAV/VNAV NA below 8°C or above 54°C. Simultaneous approach authorized. LNAV procedure NA during simultaneous operations. Use of FD or AP required during simultaneous operations. For inop ALS, increase LPV Cat E visibility to RVR 4000, LNAV/VNAV all Cats visibility to RVR 6000, LNAV Cat E visibility to 1½ SM.</div> <div>*RVR 1800 authorized with use of FD or AP or HUD to DA.</div>			

D-ATIS	MIAMI APP CON	MIAMI TOWER	GND CON	CLNC DEL	CPDLC
ARR <b>119.15</b> DEP <b>133.675</b>	<b>124.85 322.3</b>	<b>118.3 256.9</b>	<b>121.8</b> (Rwys 8L/8R/12/26L/26R) <b>127.5</b> (Rwys 9/27/30)	<b>348.6</b>	



LLEGG		VGSI and RNAV glidepath not coincident (VGSI Angle 3.00/TCH 72).		800	3000	VKZ
4000		GRITT				
GP 3.00° TCH 56		INESS				
092°		WUKVU 1.5 NM to RW09				
3000		540				
4.8 NM		4.7 NM				
3 NM		1.5 NM				
CATEGORY	A	B	C	D	E	
LPV DA*	208/24		200 (200-½)			
LNAV/VNAV DA	426/40		418 (500-¾)			
LNAV MDA	460/24	452 (500-½)	460/45	452 (500-¾)		
						<div>TDZ/CL Rwy 8R</div> <div>REIL Rwys 8L and 26R</div> <div>HIRL all Rwys</div>

MIAMI, FLORIDA  
Amdt 2 14JUL22

25°48'N-80°17'W

MIAMI INTL (MIA)  
RNAV (GPS) RWY 9