

WAAS CH 42703 W08A	APP CRS 092°	Rwy Idg 8600 TDZE 9 Apt Elev 9
--	------------------------	---

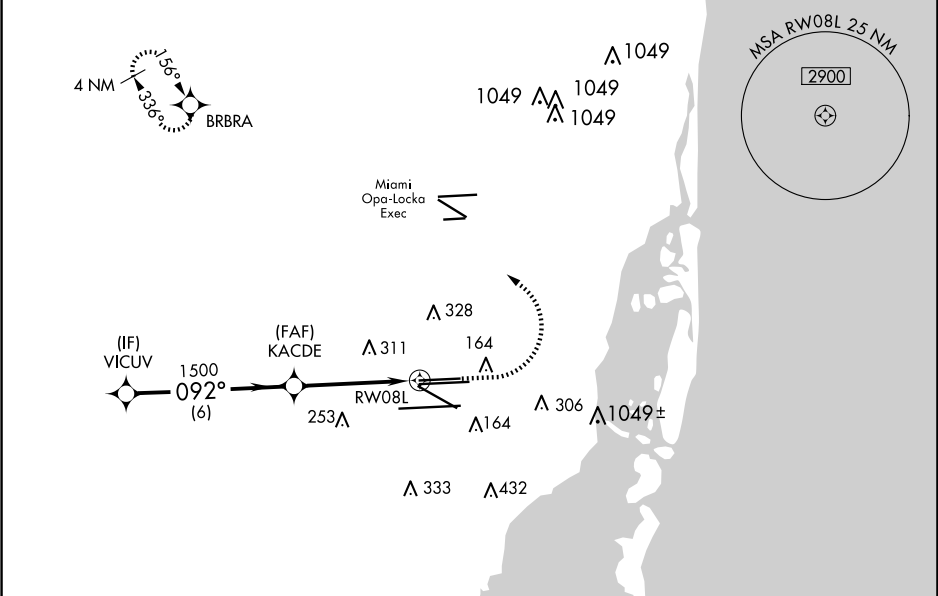
RNAV (GPS) RWY 8L
MIAMI INTL (MIA)

RNP APCH.

▼ For uncompensated Baro-VNAV systems, LNAV/VNAV NA below 5°C (41°F) or above 54°C (130°F). Simultaneous approach authorized with Rwy 9. Rwy 8L helicopter visibility reduction below ¾ SM NA. LNAV procedure NA during simultaneous operations. Use of FD or AP providing RNAV track guidance required during simultaneous operations.

MISSED APPROACH: Climb to 800 then climbing left turn to 3000 direct BRBRA and hold.

D-ATIS ARR 119.15 DEP 133.675	MIAMI APP CON 124.85 322.3	MIAMI TOWER 118.3 256.9	GND CON 121.8 (8L/8R/12/26L/26R) 127.5 (9/27/30)	348.6	CLNC DEL 135.35	CPDLC
---	--------------------------------------	-----------------------------------	--	--------------	---------------------------	-------



ELEV	9	TDZE	9
------	---	------	---

The profile view shows the vertical path of the approach. It starts at 3000 feet at VICUV, descends to 1500 feet at KACDE, and then to 253 feet at RW08L. The descent is on a 092° heading. The chart also shows the missed approach climb to 800 feet and then to 3000 feet. The profile view includes a table of altitudes and distances for each segment.

SEGMENT	START ALT	END ALT	DIST (NM)
A	3000	1500	6.0
B	1500	253	2.8
C	253	800	1.7
D	800	3000	1.7

CATEGORY	A	B	C	D
LPV DA	279-1		270 (300-1)	
LNAV/VNAV DA	513-1½		504 (600-1½)	
LNAV MDA	600-1	591 (600-1)	600-1¾	591 (600-1¾)

TDZ/CL Rwy 8R
REIL Rwys 8L and 26R
HIRL all Rwys