

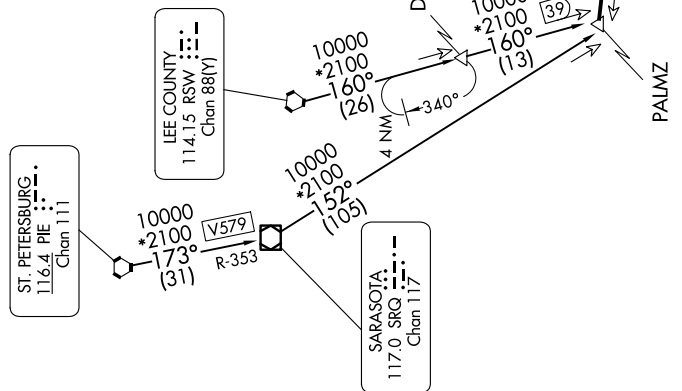
MIAMI, FLORIDA

MIAMI APP CON  
120.5 350.225  
KHST ATIS★  
132.275 269.9  
MIA D-ATIS  
119.15  
OPF ATIS  
125.9  
TMB ATIS  
124.0

ARRIVAL ROUTE DESCRIPTION

LEE COUNTY TRANSITION (RSW.PALMZ2): From over RSW VORTAC on RSW R-160 to PALMZ. Thence . . . . .  
SARASOTA TRANSITION (SRQ.PALMZ2): From over SRQ VOR/DME on SRQ R-152 to PALMZ. Thence . . . . .  
ST PETERSBURG TRANSITION (PIE.PALMZ2): From over PIE VORTAC on PIE R-173 and SRQ R-353 to SRQ VOR/DME then on SRQ R-152 to PALMZ. Thence . . . . .

RADAR required. DME required.



NOTE: Chart not to scale.

SE-3, 10 JUL 2025 to 07 AUG 2025