

MIAMI, FLORIDA

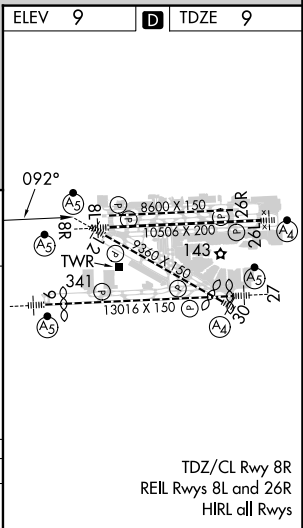
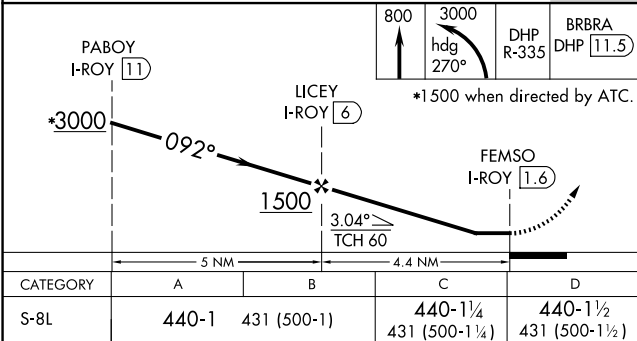
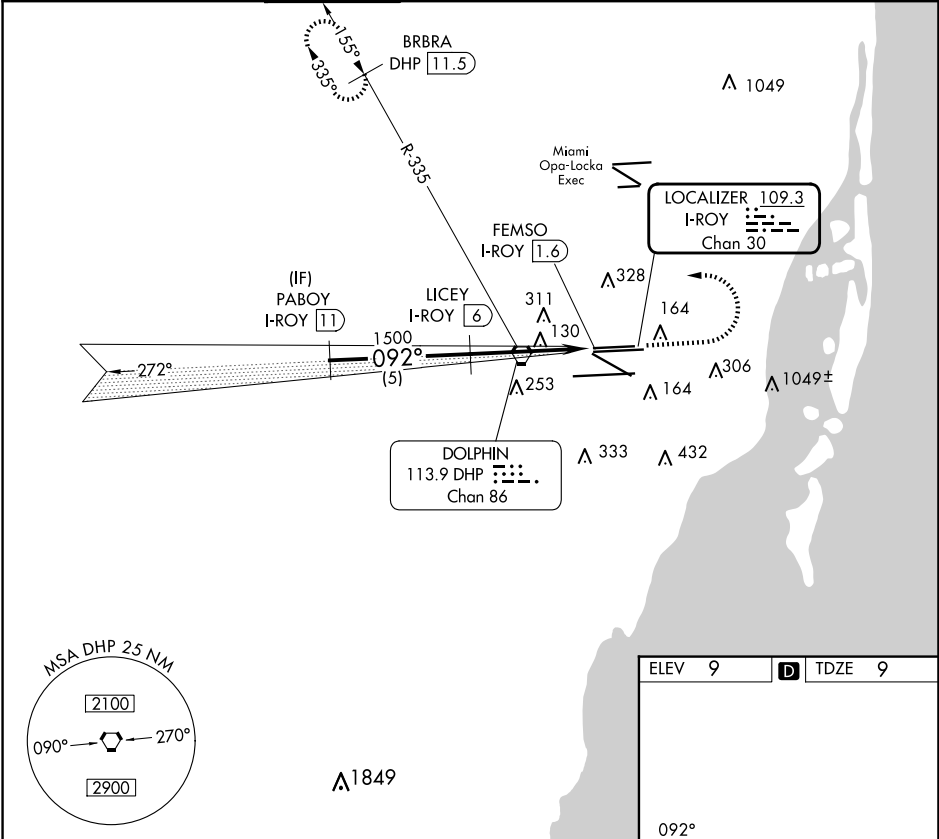
AL-257 (FAA)

24137

LOC/DME I-ROY <b>109.3</b> Chan <b>30</b>	APP CRS <b>092°</b>	Rwy ldg TDZE Apt Elev <b>8600</b> <b>9</b> <b>9</b>
---	------------------------	--

LOC RWY 8L  
MIAMI INTL (MIA)

DME required. RADAR required for procedure entry.			MISSED APPROACH: Climb to 800 then climbing left turn to 3000 on heading 270° and DHP VORTAC R-335 to BRBRA/DHP 11.5 DME and hold.		
▼ Rwy 8L helicopter visibility reduction below ¾ SM NA.					
D-ATIS ARR <b>119.15</b> DEP <b>133.675</b>	MIAMI APP CON <b>124.85 322.3</b>	MIAMI TOWER <b>118.3 256.9</b>	GND CON <b>121.8</b> (8L/8R/12/26L/26R) <b>127.5</b> (9/27/30)		CLNC DEL <b>135.35</b>
			CPDLC		



MIAMI, FLORIDA  
Orig-C 30JAN20

25°48'N-80°17'W

MIAMI INTL (MIA)  
LOC RWY 8L

SE-3, 10 JUL 2025 to 07 AUG 2025

SE-3, 10 JUL 2025 to 07 AUG 2025