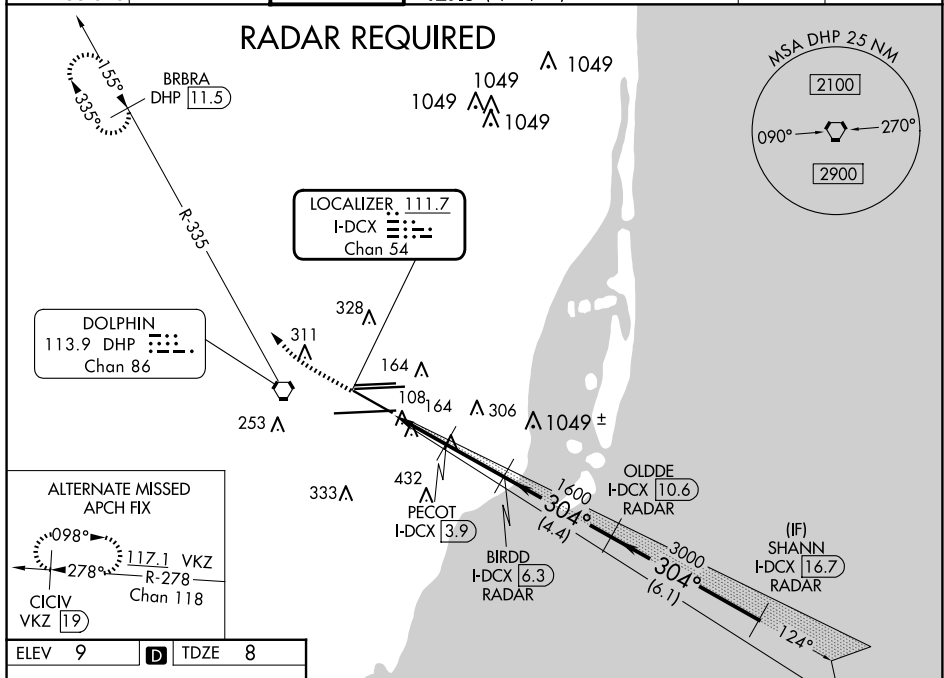


24137

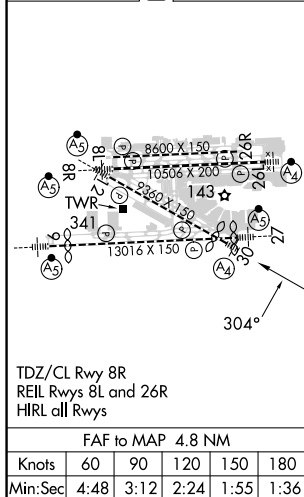
ILS or LOC RWY 30
MIAMI INTL (MIA)

MISSED APPROACH: Climb to 800 then climbing right turn to 2000 on heading 310° and DHP VORTAC R-335 to BRBRA/11.5 DME and hold.

	D-ATIS	MIAMI APP CON		MIAMI TOWER		GND CON		CLNC DEL	CPDLC
ARR DEP	119.15 133.675	124.85	322.3	118.3	256.9	121.8 127.5	(8L/8R/12/26L/26R) (9/27/30)	348.6 135.35	



ELEV 9	D	TDZE 8
--------	----------	--------



800	2000	DHP R-335	BRBRA DHP 11.5	VGS1 and ILS glidepath not coincident (VGS1 Angle 3.00/TCH 71).
<p>*LOC only.</p> <p>The diagram shows the SHANN VOR/DME station at 3000 feet MSL. A dashed line indicates the 304° radial. Key features include: - BIRDD RADAR at 1600 feet. - OLDDE RADAR at 10.6 NM. - SHANN I-DCX RADAR at 16.7 NM. - PECOT I-DCX at 3.9 NM. - *I-DCX at 2.7 NM. - *I-DCX at 1.5 NM. - Distances from the station: 1.2 NM, 1.2 NM, 2.4 NM, 4.4 NM, 6.1 NM. - Altitudes along the path: 820, 1600, 3000 feet. - GS 3.00% TCH 51.</p>				
CATEGORY	A	B	C	D
S-ILS 30	258/40 250 (300-¾)			
S-LOC 30	460/40	452 (500-¾)	460/60 452 (500-¼)	460-1½ 452 (500-1½)

MIAMI INTL (MIA)
ILS or LOC RWY 30