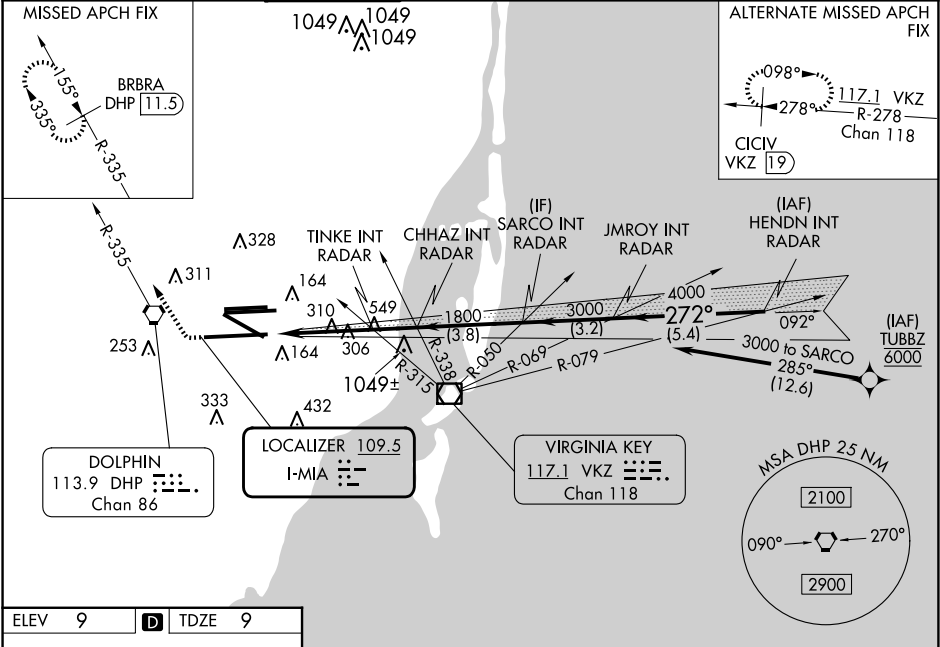


LOC I-MIA 109.5	APP CRS 272°	Rwy ldg 12755 TDZE 9 Apt Elev 9
---------------------------	------------------------	--


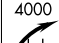
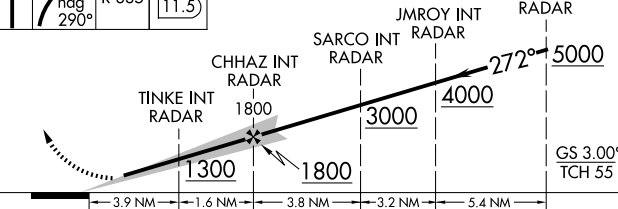
ILS or LOC RWY 27
MIAMI INTL (MIA)

DME required. RNP APCH-GPS. From TUBBZ.		MALS R	MISSED APPROACH: Climb to 800 then climbing right turn to 4000 on heading 290° and DHP VORTAC R-335 to BRBRA/ DHP 11.5 DME and hold, continue climb-in-hold to 4000.
Simultaneous approach authorized. Inop table does not apply to S-LOC 27 Cats C/D. * RVR 1800 authorized with use of FD or AP or HUD to DA.			

D-ATIS ARR 119.15 DEP 133.675	MIAMI APP CON 124.85 322.3	MIAMI TOWER 118.3 256.9	GND CON 121.8 (8L/8R/12/26L/26R) 127.5 (9/27/30)	348.6	CLNC DEL 135.35	CPDLC
---	--------------------------------------	-----------------------------------	--	--------------	---------------------------	-------



ELEV 9	D	TDZE 9
<p>Diagram of RWY 27 showing various markings and altitudes: 8600 X 150, 10506 X 200, 2350 X 150, 143, 341, 13016 X 150, 272°, 277°.</p>		
TDZ/CL Rwy 8R REIL Rwy 8L and 26R HIRL all Rwy's		
FAF to MAP 5.5 NM		
Knots	60	90 120 150 180
Min:Sec	5:30	3:40 2:45 2:12 1:50

800	4000	DHP R-335	BRBRA DHP 11.5	VGSI and ILS glidepath not coincident (VGSI Angle 3.00/TCH 71).		HENDN INT RADAR
						
CATEGORY	A		B		C	D
S-ILS 27 *	209/24 200 (200-½)					
S-LOC 27	1300/40 1291 (1300-¾)		1300/55 1291 (1300-1)		1300-3	1291 (1300-3)
TINKE FIX MINIMUMS (DUAL VOR RECEIVERS OR RADAR REQUIRED)						
S-LOC 27	560/24 551 (600-½)		560/60 551 (600-1¼)			