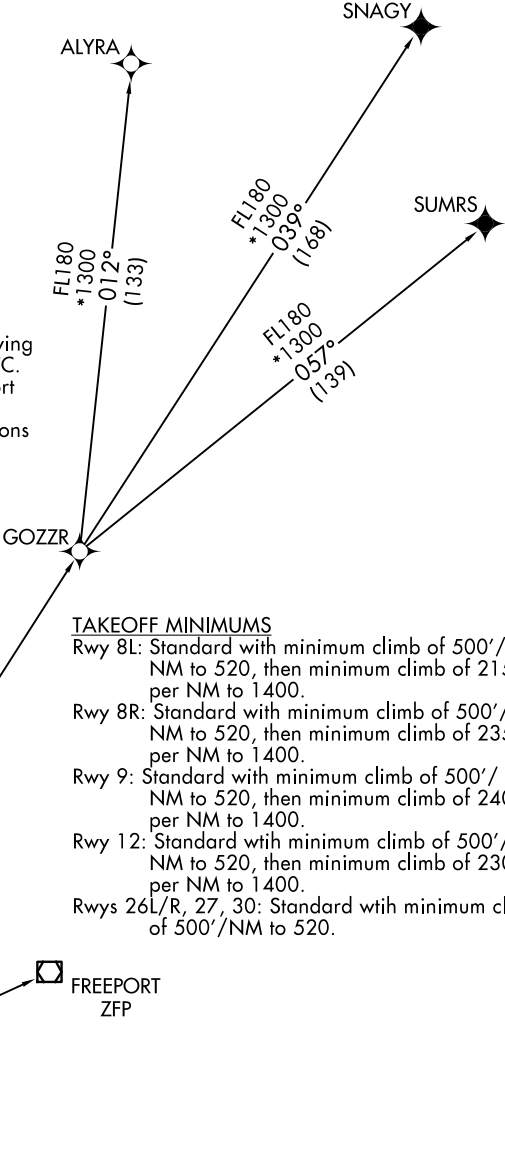
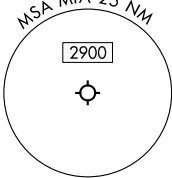


MIAMI DEP CON
119.45 290.325
D-ATIS
133.675
CLNC DEL
135.35
CPDLC
GND CON
(Rwys 8L/R, 12, 26L/R)
121.8 348.6
(Rwys 9, 27, 30)
127.5 348.6
MIAMI TOWER
118.3 256.9

TOP ALTITUDE:
5000

RNAV-1 DME/DME/IRU or GPS.
SNAGY and SUMRS Transitions: RNAV 1-GPS.
RADAR required.

- NOTE: Jet aircraft only.
NOTE: Accelerate to 250K until leaving 10000, if unable, advise ATC.
NOTE: PADUS Transition for Freeport arrivals only.
NOTE: SNAGY and SUMRS Transitions for European traffic only.



- TAKEOFF MINIMUMS**
- Rwy 8L: Standard with minimum climb of 500'/NM to 520, then minimum climb of 215' per NM to 1400.
 - Rwy 8R: Standard with minimum climb of 500'/NM to 520, then minimum climb of 235' per NM to 1400.
 - Rwy 9: Standard with minimum climb of 500'/NM to 520, then minimum climb of 240' per NM to 1400.
 - Rwy 12: Standard with minimum climb of 500'/NM to 520, then minimum climb of 230' per NM to 1400.
 - Rwys 26L/R, 27, 30: Standard with minimum climb of 500'/NM to 520.

(CONTINUED ON FOLLOWING PAGE) NOTE: Chart not to scale.