

24137

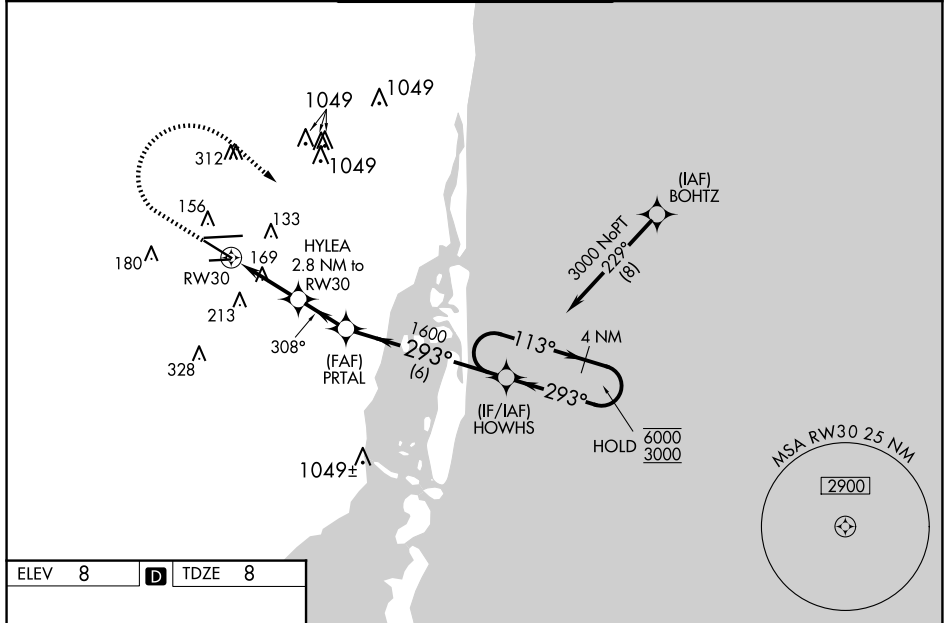
WAAS CH 53644 W30A	APP CRS 308°	Rwy Idg 6800 TDZE 8 Apt Elev 8
--	------------------------	---

RNAV (GPS) RWY 30
MIAMI-OPA LOCKA EXEC (OPF)

T Baro-VNAV and VDP NA when using Miami Intl altimeter setting.
A Rwy 30 helicopter visibility reduction below $\frac{3}{4}$ SM NA. For uncompensated Baro-VNAV systems, LNAV/VNAV NA below 7°C or above 54°C. When local altimeter setting not received, use Miami Intl altimeter setting: increase LPV DA to 276 feet and all visibilities $\frac{1}{8}$ SM; increase LNAV/VNAV DA to 438 feet and all visibilities $\frac{1}{8}$ SM; increase all MDAs 20 feet and LNAV visibility Cat C/D $\frac{1}{8}$ SM and Circling visibility Cat D $\frac{1}{4}$ SM.

MISSED APPROACH: Climb to 800 then climbing right turn to 3000 direct HOWHS and hold, continue climb-in-hold to 3000.

ATIS 125.9	MIAMI APP CON 128.6 306.975	OPA LOCKA TOWER ★ 134.675 (CTAF) 0	GND CON 120.025	CLNC DEL 119.2	GCO 119.45
---------------	--------------------------------	---------------------------------------	--------------------	-------------------	---------------



CATEGORY	A	B	C	D
LPV DA	258- ³ / ₄	250 (300- ³ / ₄)		
LNAV/VNAV DA	420-1 ¹ / ₈	412 (500-1 ¹ / ₈)		
LNAV MDA	420-1	412 (500-1)	420-1 ¹ / ₈	412 (500-1 ¹ / ₈)
C CIRCLING	480-1 472 (500-1)	520-1 512 (600-1)	620-1 ³ / ₄ 612 (700-1 ³ / ₄)	740-2 ¹ / ₄ 732 (800-2 ¹ / ₄)

MIRL Rwy 9R-27L
HIRL Rwsy 9L-27R and 12-30

MIAMI, FLORIDA
Orig 03NOV22

MIAMI-OPA LOCKA EXEC (OPF)
RNAV (GPS) RWY 30

25°54'N-80°17'W

SE-3, 10 JUL 2025 to 07 AUG 2025