

MIAMI, FLORIDA

AL-256 (FAA)

24193

WAAS CH 62922 W27A	APP CRS 273°	Rwy Idg 8002 TDZE 8 Apt Elev 8
--	------------------------	---

RNAV (GPS) RWY 27R

RNP APCH - GPS.




Baro-VNAV NA w/o using Miami Intl altimeter setting. For uncompensated Baro-VNAV systems, LNAV/VNAV NA below 5°C or above 54°C. When local altimeter setting not received, use Miami Intl altimeter setting and increase all DA/MDA 20 feet and Circling Cat D visibility ½ SM. For Inop ALS, increase LPV all Cats visibility to ¾ SM, LNAV/VNAV all Cats to 1¾ SM, and LNAV Cats C and D visibility to 1½ SM. Rwy 27R helicopter visibility reduction below ¾ SM NA.

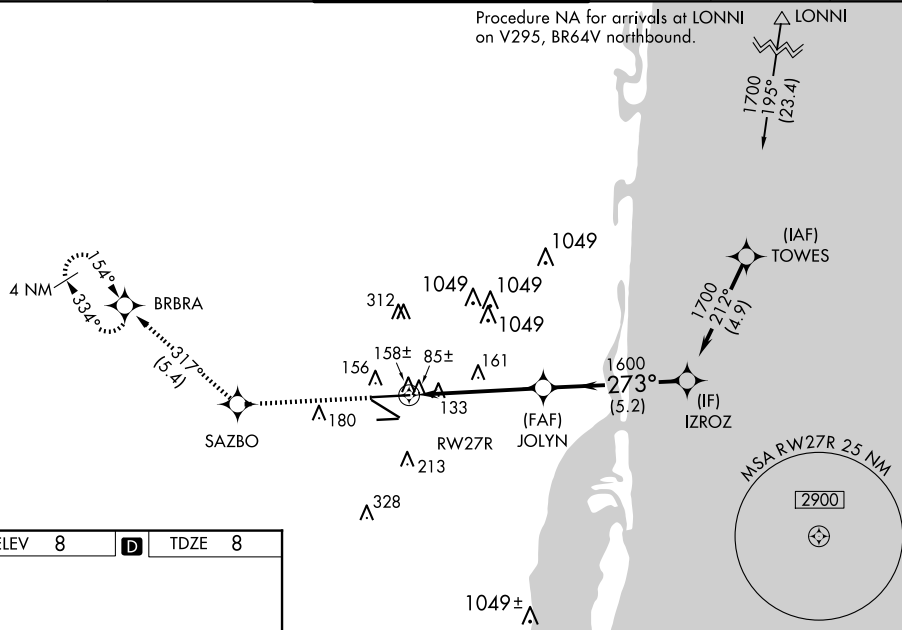
MALS



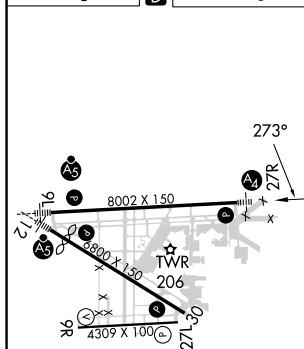
MISSED APPROACH: Climb to 2000 direct SAZBO and on track 317° to BRBRA and hold.

ATIS 125.9	MIAMI APP CON 128.6 306.975	OPA LOCKA TOWER ★ 134.675 (CTAF) 0	GND CON 120.025	CLNC DEL 119.2	GCO 119.45
---------------	--------------------------------	---------------------------------------	--------------------	-------------------	---------------

Procedure NA for arrivals at LONNI  LONNI
on V295, BR64V northbound.



ELEV	8	D	TDZE	8
------	---	----------	------	---



MIRL Rwy 9R-27L
HIRL Rwys 9L-27R and 12-30 **L**

2000 ↑	SAZBO ☼	tr 317°	BRBRA ☼				
CATEGORY	A		B		C		D
LPV DA			291- ³ / ₄		283 (300- ³ / ₄)		
LNNAV/ VNAV	DA		413-1		405 (500-1)		
LNNAV MDA	420- ³ / ₄		412 (500- ³ / ₄)		420-1		412 (500-1)
CIRCLING	540-1		532 (600-1)		620-1 ³ / ₄ 612 (700-1 ³ / ₄)		740-2 ¹ / ₄ 732 (800-2 ¹ / ₄)

MIAMI, FLORIDA
Orig-E 11JUL24

25°54'N-80°17'W

MIAMI-OPA LOCKA EXEC (OPF)
RNAV (GPS) RWY 27R

SE-3, 10 JUL 2025 to 07 AUG 2025