


WAAS CH 69522 W12A	APP CRS 128°	Rwy Idg TDZE Apt Elev 8	6000 8 8
--	------------------------	--------------------------------------	-------------------------------------

RNAV (GPS) RWY 12

MIAMI-OPA LOCKA EXEC (OPF)

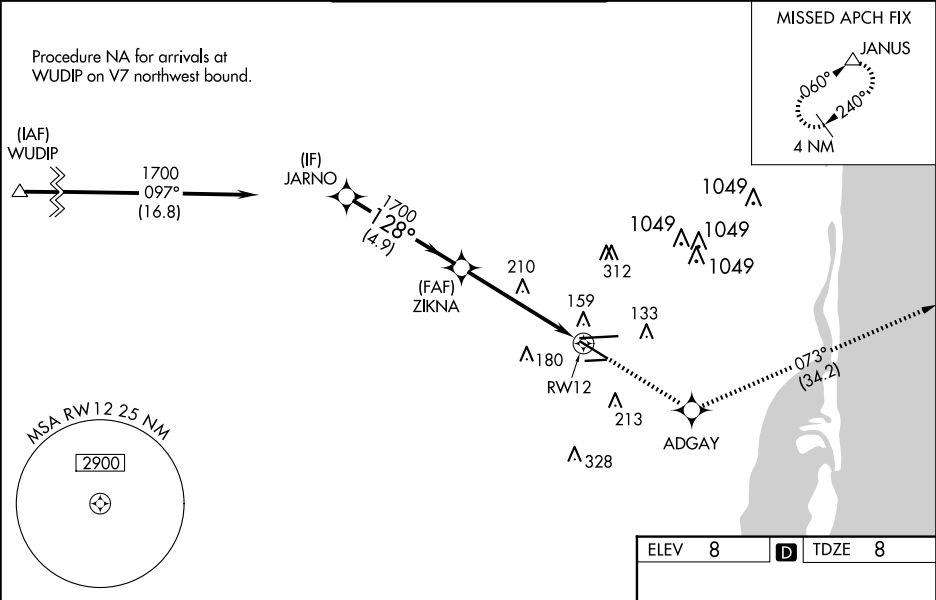
⚠ Baro-VNAV NA when using Miami Intl altimeter setting. For uncompensated Baro-VNAV systems, LNAV/VNAV NA below -1.5°C (5°F) or above 43°C (109°F). Helicopter visibility reduction below ¾ SM NA. DME/DME RNP-0.3 NA. VDP NA with Miami Intl altimeter setting. When local altimeter setting not received, use Miami Intl altimeter setting and increase all DA/MDA 20 feet and Circling Cat D visibility ¼ SM. Inop table does not apply. For inop MALSR, increase LNAV/VNAV all Cats visibility and LNAV Cats A and B to 1 mile and LNAV Cats C and D visibility to 1½ miles. For inop MALSR, when using Miami Intl altimeter setting, increase LNAV/VNAV all Cats visibility and LNAV Cats A and B visibility to 1 mile.

MALSR



MISSED APPROACH:
Climb to 2000 direct
ADGAY and on track
073° to JANUS and
hold.

ATIS 125.9	MIAMI APP CON 128.6 306.975	OPA LOCKA TOWER ★ 134.675 (CTAF) 0	GND CON 120.025	CLNC DEL 119.2	GCO 119.45
----------------------	---------------------------------------	---	---------------------------	--------------------------	----------------------



		ELEV 8		D TDZE 8	
		2000	ADGAY	JANUS	
		↑	✱	tr 073°	△
		*LNAV only.			
		JARNO	ZIKNA		
		1700	1700		
		GP 3.00°			
		TCH 53			
		4.9 NM	3.7 NM	1.5 NM	
CATEGORY	A	B	C	D	
LPV DA	208-¾		200 (200-¾)		
LNAV/VNAV DA	320-¾		312 (400-¾)		
LNAV MDA	520-¾	512 (600-¾)	520-1	512 (600-1)	
CIRCLING	540-1	532 (600-1)	620-1¾ 612 (700-1¾)	740-2¾ 732 (800-2¾)	