

24137

LOC/DME I-OLX <u>111.55</u> Chan 52 (Y)	APP CRS 128°	Rwy Idg 6000 TDZE 8 Apt Elev 8
---	------------------------	---

ILS or LOC RWY 12
MIAMI-OPA LOCKA EXEC(OPF)

T Inop table does not apply to S-ILS 12. Helicopter visibility reduction below $\frac{3}{4}$ SM NA. VDP NA with Miami Intl altimeter setting. When local altimeter setting not received, use Miami Intl altimeter setting and increase all DA/MDA 20 feet and Circling Cat D visibility $\frac{1}{4}$ SM. For inop MALSR, increase S-LOC 12 Cats A and B visibility to 1 mile and Cats C and D visibility to $\frac{1}{2}$ miles.

MALSR

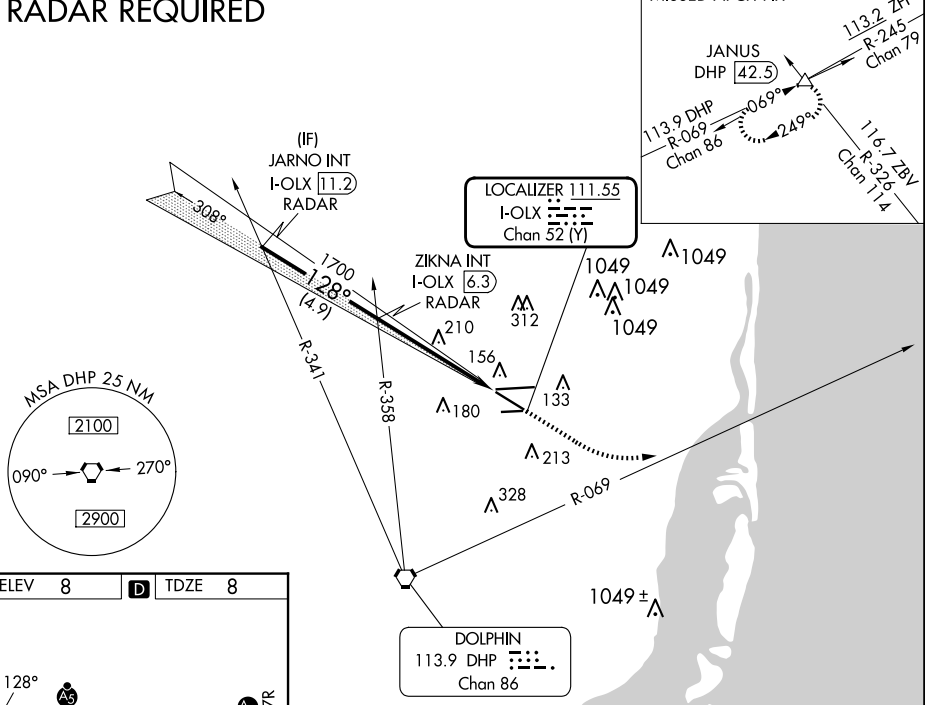


MISSED APPROACH: Climb to 800 then climbing left turn to 2000 on heading 090° and DHP VORTAC R-069 to JANUS INT/DHP 42.5 DME and hold.

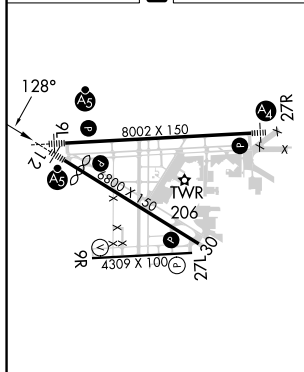
ATIS 125.9	MIAMI APP CON 128.6 306.975	OPA LOCKA TOWER ★ 134.675 (CTAF) 0	GND CON 120.025	CLNC DEL 119.2	GCO 119.45
---------------	--------------------------------	---------------------------------------	--------------------	-------------------	---------------

RADAR REQUIRED

MISSED APCH FIX



ELEV	8	D	TDZE	8
------	---	----------	------	---



MIRL Rwy 9R-27L	
HIRL Rwy 9L-27R and 12-30	L
FAF to MAP 5.2 NM	

Knots	60	90	120	150	180
Min:Sec	5:12	3:28	2:36	2:05	1:44

<p>JARNO INT I-OLX 11.2 RADAR</p>		<p>ZIKNA INT I-OLX 6.3 RADAR</p>		<p>800 ↑</p>	<p>2000 hdg 090°</p>	<p>DHP R-069</p>	<p>JANUS △</p>
<p style="text-align: right;">*LOC only.</p>							
GS 3.00° TCH 53							
CATEGORY	A		B		C		D
S-ILS 12	208- ³ / ₄ 200 (200- ³ / ₄)						
S-LOC 12	520- ³ / ₄ 512 (600- ³ / ₄)			520-1 512 (600-1)			
CIRCLING	540-1 532 (600-1)			620- ¹ / ₄ 612 (700- ¹ / ₄)		740-2 ¹ / ₄ 732 (800-2 ¹ / ₄)	

MIAMI, FLORIDA
Amdt 2C 02DEC21

25°54'N-80°17'W

MIAMI-OPA LOCKA EXEC (OPF)
ILS or LOC RWY 12

SE-3, 10 JUL 2025 to 07 AUG 2025

SE-3, 10 JUL 2025 to 07 AUG 2025