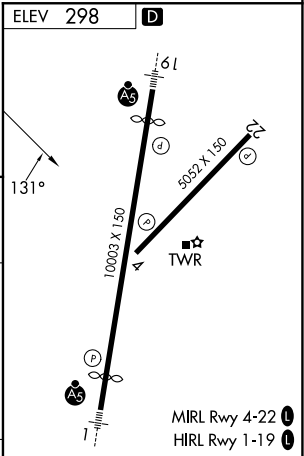
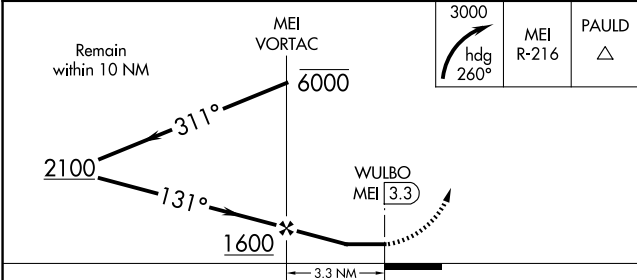
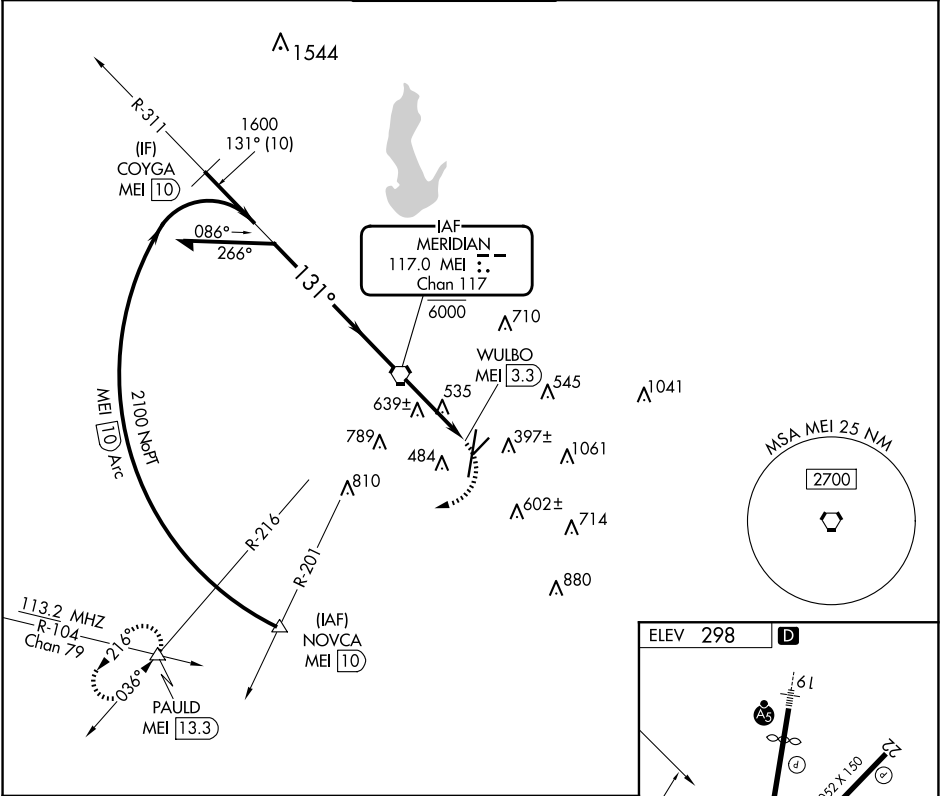


VORTAC MEI <b>117.0</b> Chan <b>117</b>	APP CRS <b>131°</b>	Rwy Ldg TDZE Apt Elev <b>298</b>	<b>N/A</b> <b>N/A</b> <b>298</b>
---	------------------------	---	--

VOR-A  
KEY FLD (MEI)

<div><div></div><div></div></div> <div>Circling NA east of Rwy 1 and southeast of Rwy 22. Procedure turn NA for Cat E.</div>	MISSED APPROACH: Climbing right turn to 3000 on heading 260° and MEI VORTAC R-216 to PAULD INT/MEI VORTAC 13.3 DME and hold.
--	--

ATIS <b>126.475 291.675</b>	MERIDIAN APP CON ★ <b>120.5 269.325</b>	KEY TOWER ★ <b>133.975 (CTAF) 0 257.8</b>	GND CON <b>121.9 348.6</b>	CLNC DEL <b>121.9 348.6</b>	UNICOM <b>122.95</b>
--------------------------------	--	--	-------------------------------	--------------------------------	-------------------------



CATEGORY	A	B	C	D	E	FAF to MAP 3.3 NM					
CIRCLING	900-1	602 (700-1)	960-1¾	1120-2¾	1120-3	Knots	60	90	120	150	180
			662 (700-1¾)	822 (900-2¾)	822 (900-3)	Min:Sec	3:18	2:12	1:39	1:19	1:06

SC-4, 10 JUL 2025 to 07 AUG 2025

SC-4, 10 JUL 2025 to 07 AUG 2025