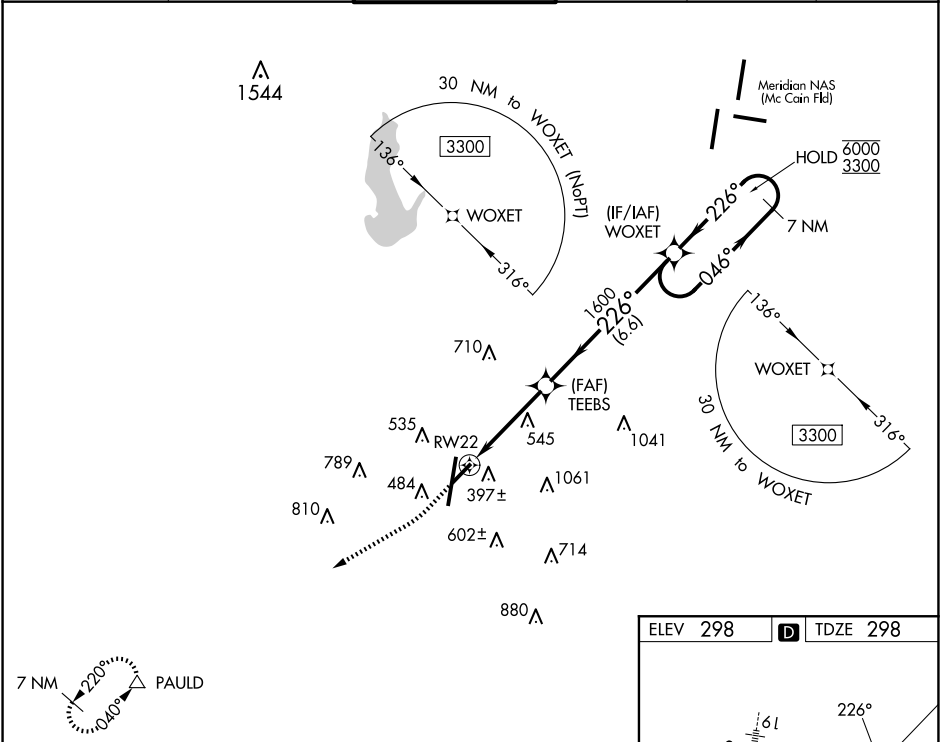


WAAS CH 48833 W22A	APP CRS 226°	Rwy Ldg TDZE 298 Apt Elev 298
--	------------------------	---

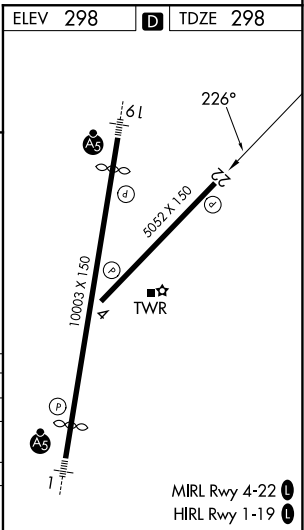
RNAV (GPS) RWY 22

KEY FLD (MEI)

RNP APCH - GPS.				MISSED APPROACH: Climb to 1000 then climbing right turn to 3000 direct PAULD and hold.	
▼ Rwy 22 helicopter visibility reduction below ¾ SM NA. ▲ For uncompensated Baro-VNAV systems, LNAV/VNAV NA below -7°C or above 54°C. Circling NA east of Rwy 1 and southeast of Rwy 22.					
ATIS 126.475 291.675	MERIDIAN APP CON ★ 120.5 269.325	KEY TOWER ★ 133.975 (CTAF) 0 257.8	GND CON 121.9 348.6	CLNC DEL 121.9 348.6	UNICOM 122.95



1000 3000 PAULD		TEEBS 1600 1.8 NM to RW22		WOXET 7 NM Holding Pattern 046° → 6000 ← 226° 3300	
RW22		1.8 NM		GP 3.00° TCH 52	
1.8 NM		2.1 NM		6.6 NM	
CATEGORY	A	B	C	D	
LPV DA		592-7 ⁷ / ₈	294 (300-7 ⁷ / ₈)		
LNAV/VNAV DA		825-1 ¹ / ₂	527 (600-1 ¹ / ₂)		
LNAV MDA	920-1	622 (700-1)	920-1 ³ / ₄	622 (700-1 ³ / ₄)	
CIRCLING	920-1	622 (700-1)	960-1 ³ / ₄ 662 (700-1 ³ / ₄)	1120-2 ³ / ₄ 822 (900-2 ³ / ₄)	



SC-4, 10 JUL 2025 to 07 AUG 2025

SC-4, 10 JUL 2025 to 07 AUG 2025